

# T ECHNICAL INFORMATION



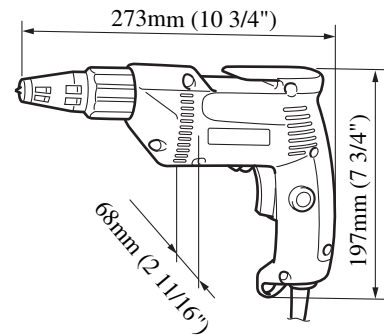
New Tool

Models No. ▶ 6821

Description ▶ Drywall Screwdriver

## CONCEPTION AND MAIN APPLICATIONS

Model 6821 is a low-cost version that has been succeeding model #6820V with clam shell housing. The functions of variable speed and reversing were combine as one switch. It's shape of the grip is designed for operator to be able to push the center of the drill shaft effectively and large trigger switch improves operability.



## ▶ Specifications

| Voltage (V) | Current (A) | Cycle (Hz) | Continuous Rating (W) |        | Max. Output(W) |
|-------------|-------------|------------|-----------------------|--------|----------------|
|             |             |            | Input                 | Output |                |
| 100         | 6.0         | 50/60      | 570                   | 280    | 590            |
| 120         | 5.2         | 50/60      | 570                   | 280    | 590            |
| 200         | 3.0         | 50/60      | 570                   | 280    | 590            |
| 220         | 2.7         | 50/60      | 570                   | 280    | 590            |
| 230         | 2.6         | 50/60      | 570                   | 280    | 590            |
| 240         | 2.5         | 50/60      | 570                   | 280    | 590            |

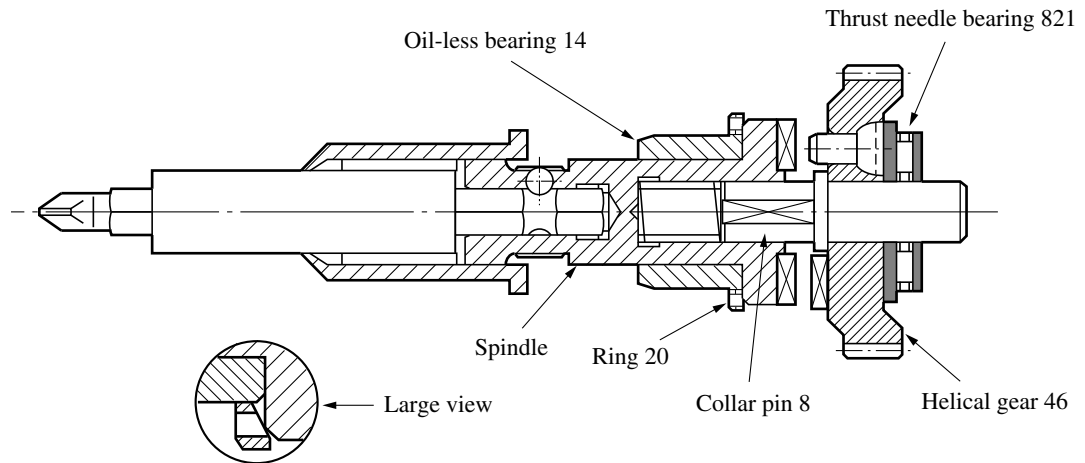
|                      |   |                    |
|----------------------|---|--------------------|
| <b>No load speed</b> | 0-4000/min  |                    |
| <b>Driving shank</b> | Phillips bit 2-25, Magnetic connect bit 6.35-60<br>[opposite side 6.35mm (1/4" ) hexagonal] |                    |
| <b>Max. capacity</b> | <b>Drywall</b>  | 5mm, No10 (0.190") |
|                      | <b>Teks</b>   | 6mm, No14 (0.242") |

## ▶ Standard equipment

- Phillips bit 2-25-----1
- Magnetic connect bit 6.35-60 -----1
- Phillips bit 1-25, Phillips bit 2-25,
- Phillips bit 3-25,
- Magnetic connect bit 6.35?60

## ► Repair

For disassembly and assembly pay following attentions.



- 1) Mount ring 20 so that its tapered side contacts spindle.
- 2) Mount collar pin 20 so that its width across flat faces spindle.
- 3) Mount thrust needle bearing 821 so that washer that has a bigger outer diameter should be on helical gear 46 side.
- 4) Mount oil-less bearing so that its chamfering side faces the front tip.

## ► Wiring diagram

