

# T ECHNICAL INFORMATION



New Tool

**Models No.** ▶ 4101RH

**Description** ▶ 125 mm(5") Cutter

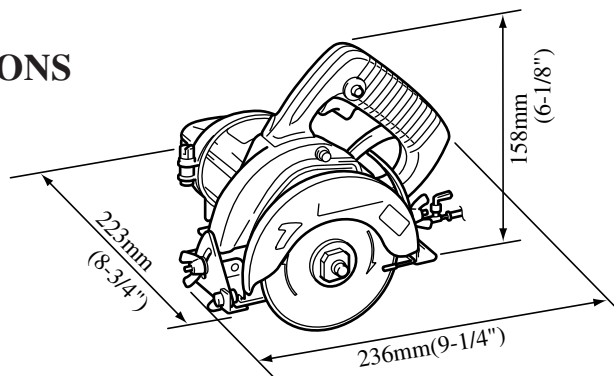
## CONCEPTION AND MAIN APPLICATIONS

Model 4101RH is sister version of the existing Model 4101R.

Model 4101RH complies with CE- regulation.

Its brief benefits are;

- \* More endurable and longer life motor
- \* Equiped with earth leakage breaker on power supply cord



### ▶ Specifications

Voltage (V)	Current (A)	Cycle (Hz)	Continuous Rating (W)		Max. Output(W)
			Input	Output	
230	4	50/60	860	580	1200

<b>No Load Speed</b>		12000rpm
<b>Dimension of Digmond wheel</b>	<b>Outer dis.</b>	110mm(4-3/8")~125mm(5")
	<b>Arbor dis.</b>	20mm(3/4)
<b>Insulation class</b>		Single
<b>Net weight</b>		2.9kg(6.4lbs)
<b>Power supply cord</b>		3.0m(9.8ft)

Max.cutting capacity

Bevel angle	Dianmond wheel:110mm(4-3/8")	Dianmond wheel:125mm(5")
90°	34mm(1-3/8")	41.5mm(1-5/8")
45°	21mm(13/16")	26mm(1")

### ▶ Standard equipment

- Wrench 22 - - - - - 1 pc.
  - Hex.Wrench 5 - - - - - 1 pc.
  - Wrench Holder 5.6 - - - - - 1 pc.
  - Plug - - - - - 1 pc.
  - Vinyl Tube 5X7X5000 - - - - - 1 pc.
  - Diamond Wheel 110(wet) - - - - - 1 pc.
- <Note>The standard equipment may differ from contry to country.

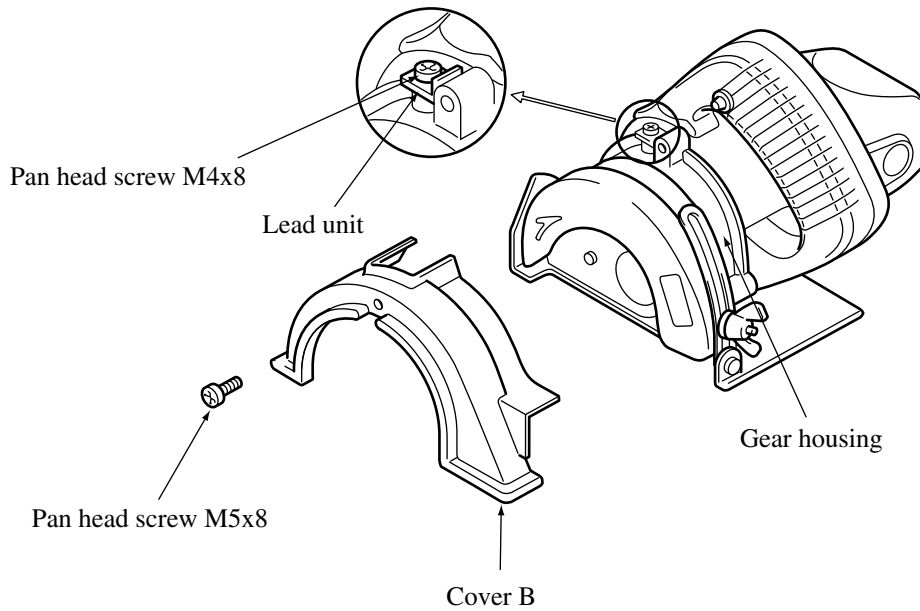
### ▶ Optional accessories

- Diamond wheel 110 (Wet)
- Guide Rule
- Wing bolt M5x10 (for attaching Guide Rule)

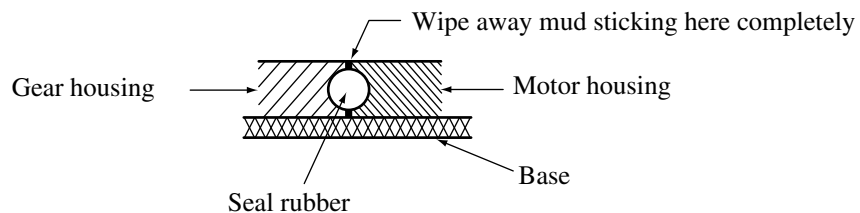
## ► Repair

Same as 4101R, except the following items

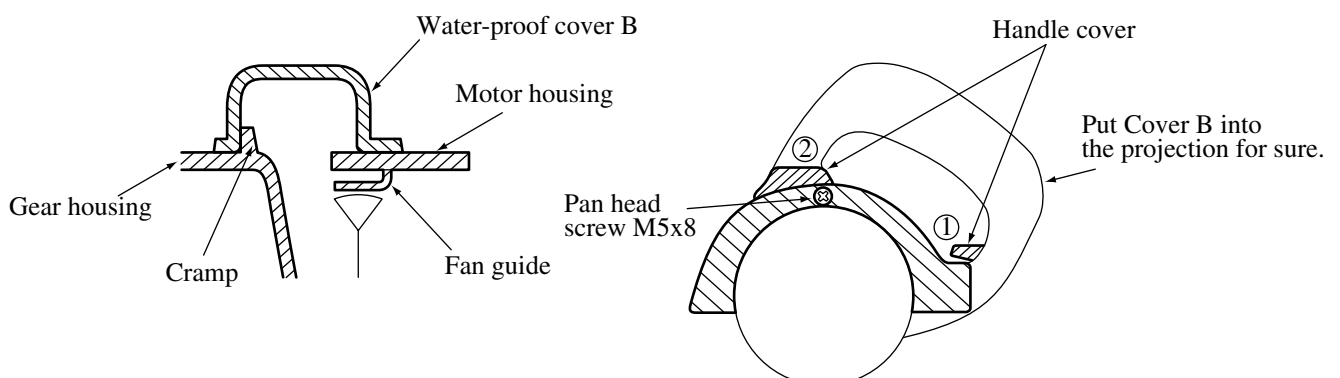
- 1) In disassembling Motor housing and Gear housing ( See the illustration below )
  - a) Loosen Pan head screw M5x8, and detach Cover B.
  - b) As Lead unit is earthed to Gear housing, remove Pan head screw M4X8.
  - c) When having removed the screws in three points, Motor housing and Gear housing are dismantled.



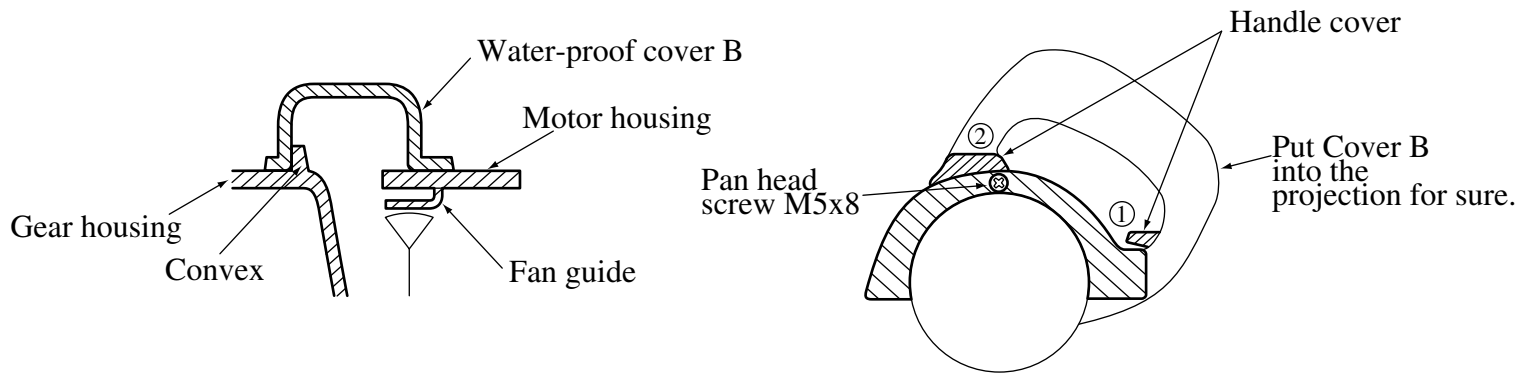
- 2) Before attaching, wipe away mud completely so that there may be no gap between the faces of Gear housing and Motor housing.



- 3) In Water-proof cover B, make the Machine in the condition of incision depth 0 , and remove or attach it as shown in the illustration below.  
Place Cover B into Projection (1) of Handle cover , and then put it into Projection (2) to fix by Pan head screw.

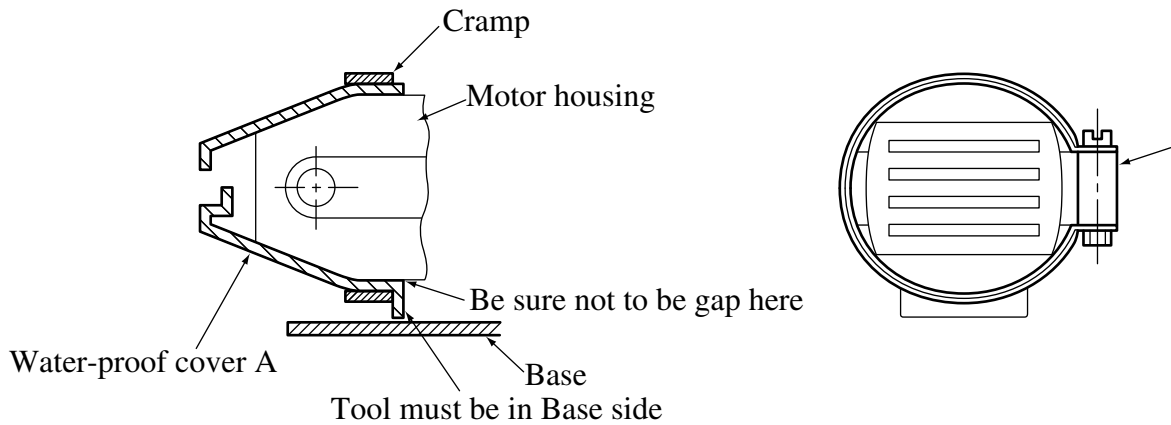


4) In Water-proof cover A, install it so that there may be no gap between the meeting faces with Motor housing.



5) Be sure to clean up mud sticking to each part absolutely in repairing.  
( Refer to Handling manual as to details )

6) Tightening torque of Bearing retainer: Set as 120 ~ 160 kg.cm



Cramp (Attach it so that Bolt is in Right side seen from Motor housing rear part)

