

T ECHNICAL INFORMATION

Model No. ▶ MT413, MT413G

Description ▶ Cutter 110mm (4-3/8")

CONCEPT AND MAIN APPLICATIONS

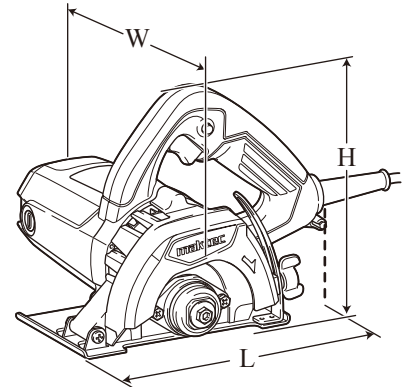
Model MT413 has been developed as the cosmetic change model of **maktec** cutter MT410.

Its main features are:

- Industrial performance and durability at less expense
- Ergonomically designed handle with rubberized soft grip

MT413G is Green housing model only for Korean market.

MT413Z does not include Water supply pipe set



Dimensions: mm (")	
Length (L)	227 (8-15/16)
Width (W)	209 (8-1/4)
Height (H)	166 (6-1/2)

► Specification

Voltage (V)	Current (A)	Cycle (Hz)	Continuous Rating (W)		Max. Output (W)
			Input	Output	
110	12.0	50/60	1,200	660	1,650
120	9.5	50/60	---	660	1,650
127	10.0	50/60	1,200	660	1,650
220	5.7	50/60	1,200	660	1,650
230	5.5	50/60	1,200	660	1,650
240	5.3	50/60	1,200	660	1,650

No load speed: min. ⁻¹ =rpm	13,000	
Diamond wheel: mm (")	Diameter	110 (4-3/8)
	Hole diameter	20 (13/16)
Max cutting capacity: mm (")	32 (1-1/4)	
Protection against electric shock	Double insulation	
Power supply cord: m (ft)	2.0 (6.6)	
Weight according to EPTA-Procedure 01/2003*1: kg (lbs)	2.9 (6.4)	

*1 with Water supply pipe set

► Standard equipment

Wrench 22	1
Hex wrench 5	1
Water supply pipe set	1 (for some countries only)
Vinyl tube 5	1 (for India only)
Tube holder	1 (for India only)

Note: The standard equipment for the tool shown above may vary by country.

► Optional accessories

No

► Repair

CAUTION: Repair the machine in accordance with “Instruction manual” or “Safety instructions”.

[1] NECESSARY REPAIRING TOOLS

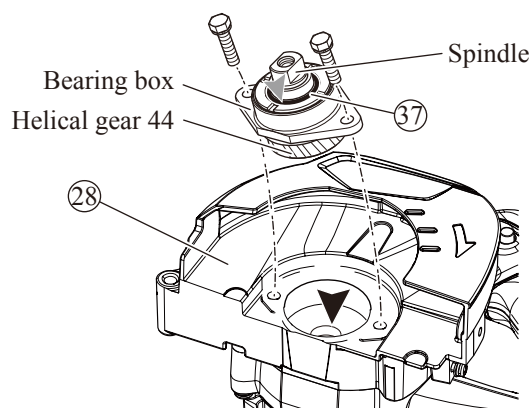
Code No.	Description	Use for
1R217	Ring 22	supporting Bearing box when removing Helical gear 34
1R269	Bearing extractor (small)	removing Ball bearings
1R340	Bearing retainer wrench	removing/ mounting Bearing retainer 19-33

[2] LUBRICATION

Apply **Makita grease N. No.1** to the portions designated with the black triangle, and apply Lubricant “VG100” to the portions designated with gray triangle.

Item No.	Description	Portion to lubricate	Lubricant	Amount
⑳	Blade case complete	Gear room where Helical gear 44 rotates	◀ : Makita grease N No.1	5g
㉟	O Ring 18	Whole surface	◀ : Lubricating oil VG100	a little

Fig. 1



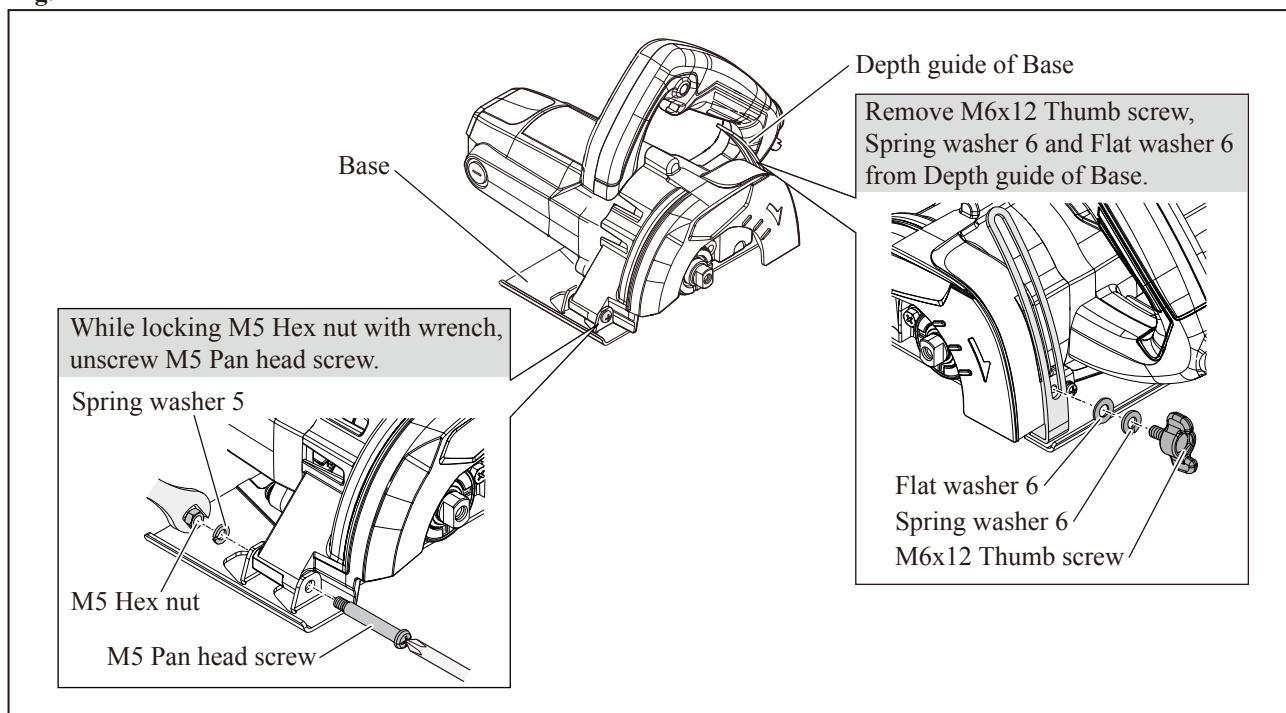
[3] DISASSEMBLY/ASSEMBLY

[3] -1. Base

DISASSEMBLING

Disassemble Base from the machine by removing M6x12 Thumb screw and M5 Pan head screw. (Fig. 2)

Fig. 2



► Repair

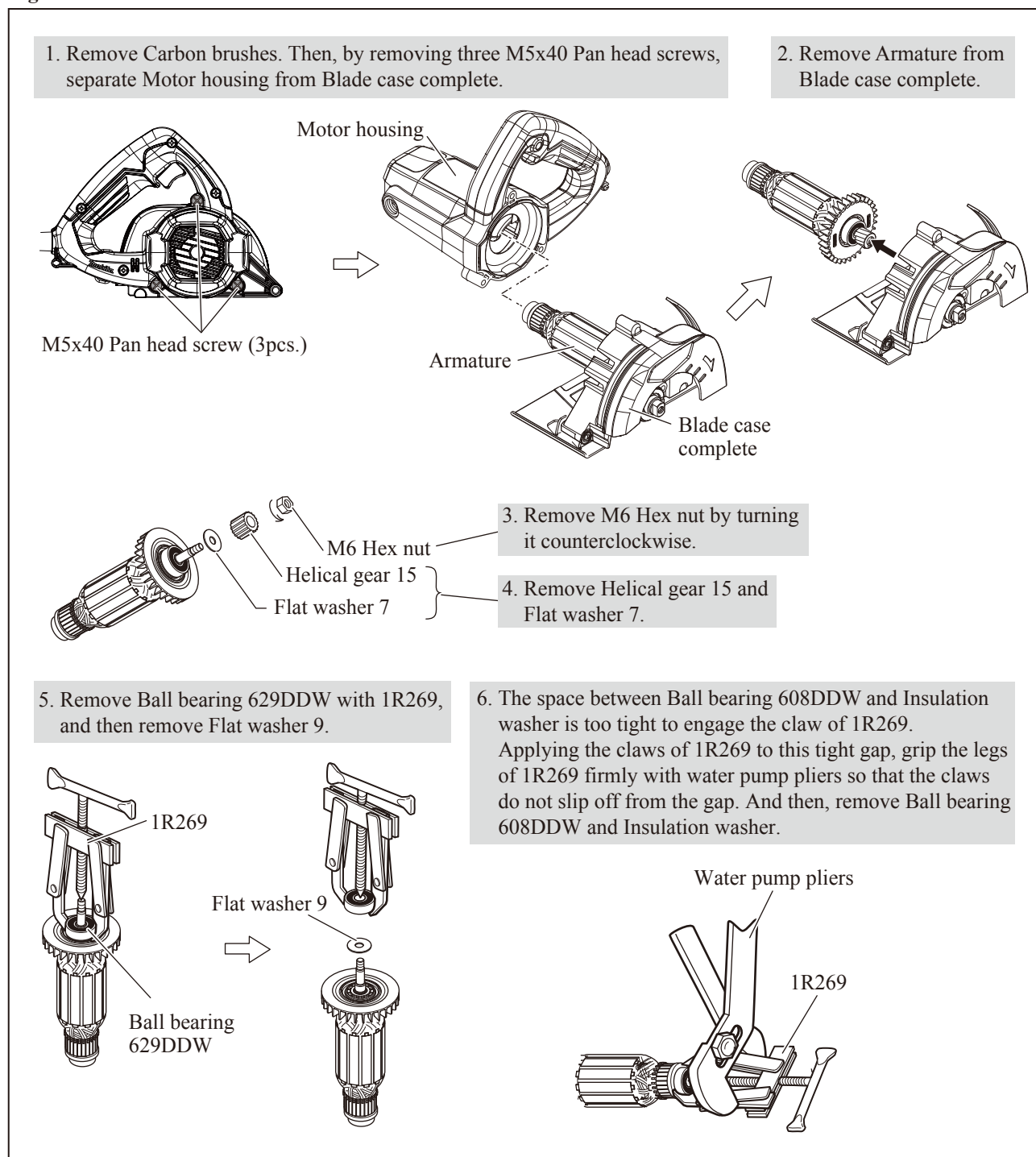
[3] DISASSEMBLY/ASSEMBLY

[3] -2. Armature, Ball bearing 629DDW / 608ZZ, Helical gear 15

DISASSEMBLING

Disassemble Armature from Blade case complete, and remove Ball bearings and Insulation washer. (Fig. 3)

Fig. 3



ASSEMBLING

Assemble by reversing the disassembly procedure. (Refer to Fig. 3)

Note in assembling:

Do not forget to mount the following Flat washers.

- * Flat washer 9 between Armature fan and Ball bearing 629DDW
- * Flat washer 7 between Ball bearing 629DDW and Helical gear 15

► Repair

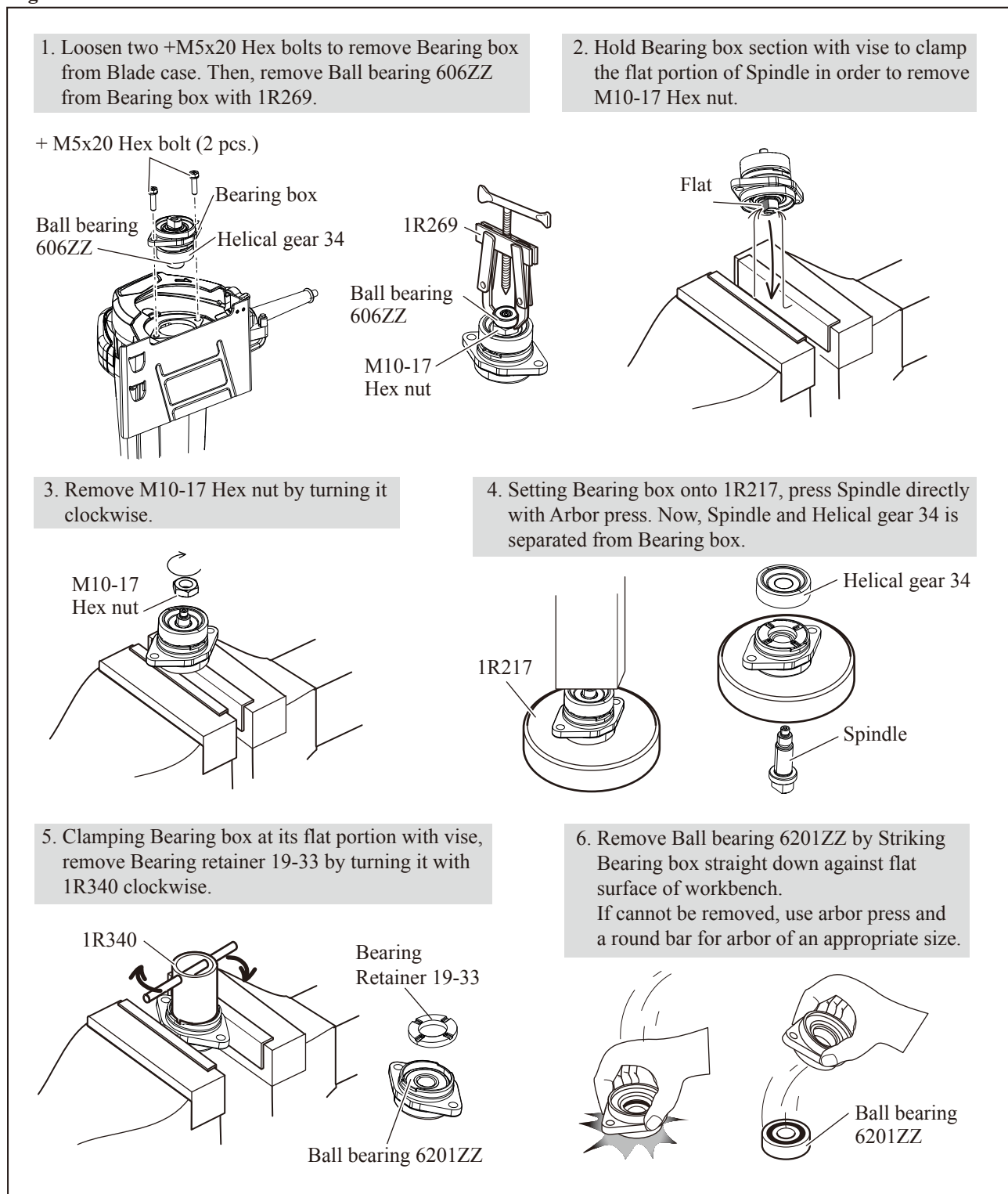
[3] DISASSEMBLY/ASSEMBLY

[3] -3. Helical gear 34, Ball bearing 6201ZZ, Ball bearing 606ZZ

DISASSEMBLING

Disassemble Bearing box section as drawn in **Fig. 4**.

Fig. 4



ASSEMBLING

Assemble by reversing the disassembly procedure. (Refer to **Fig. 4**)

► **Circuit diagram**

Fig. D-1A

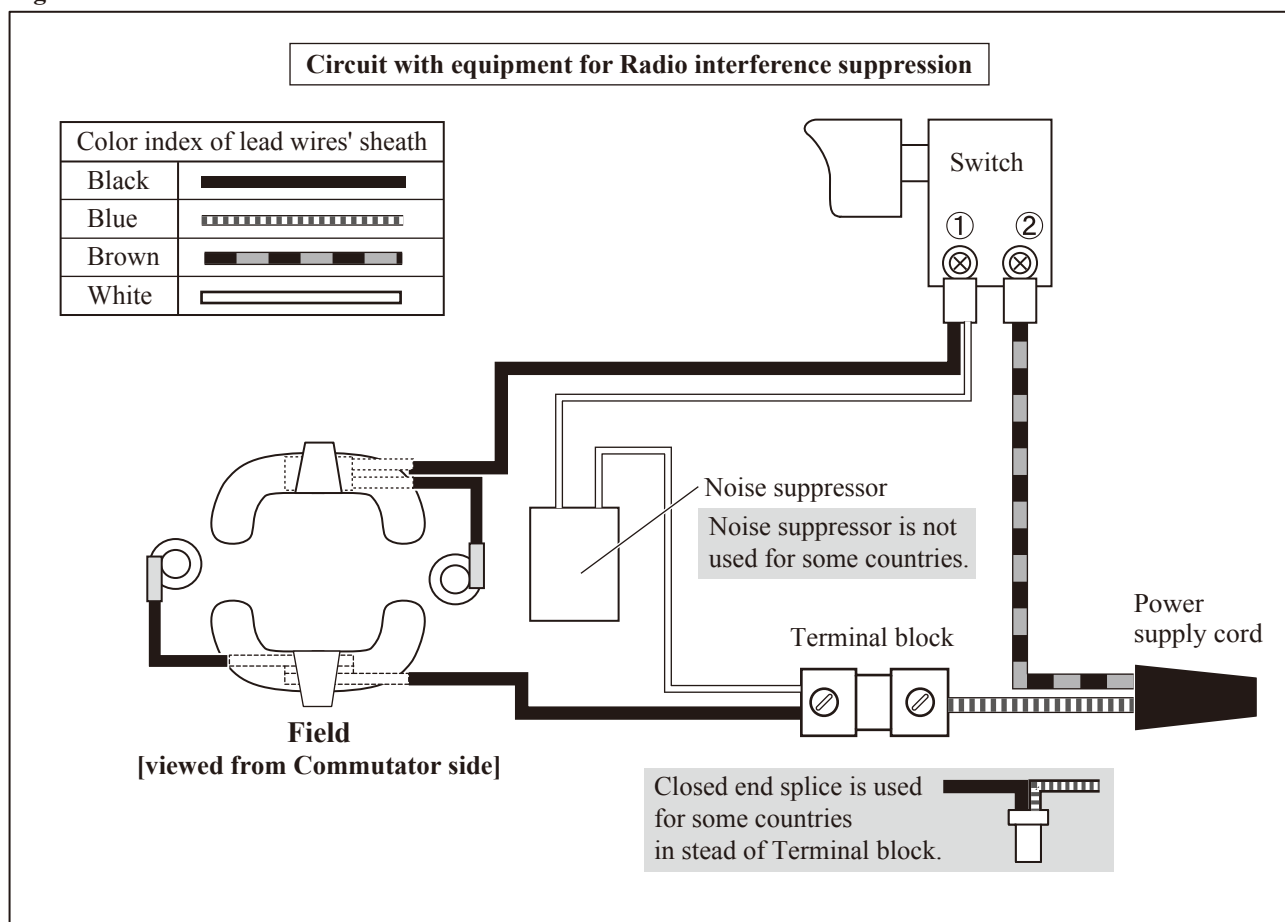
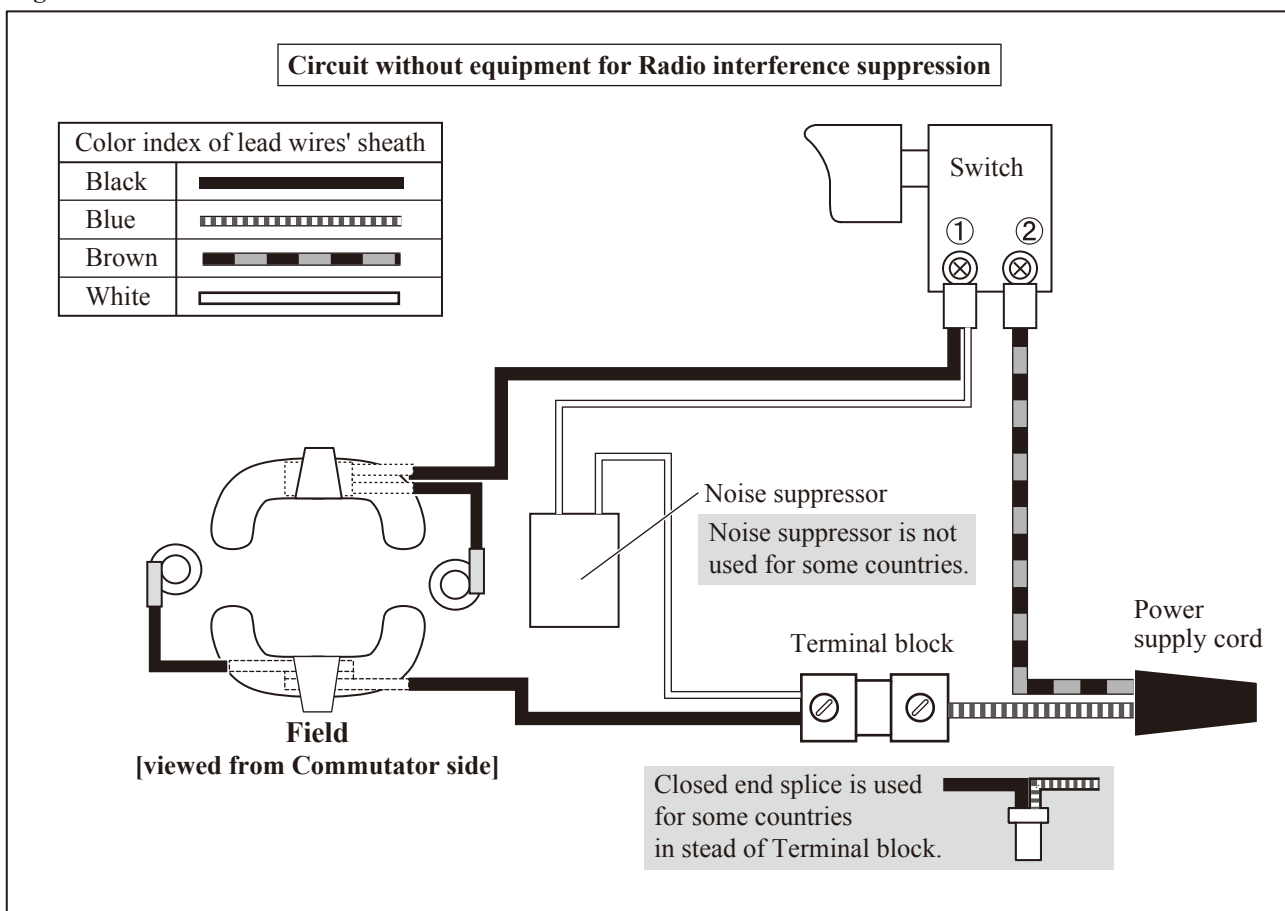
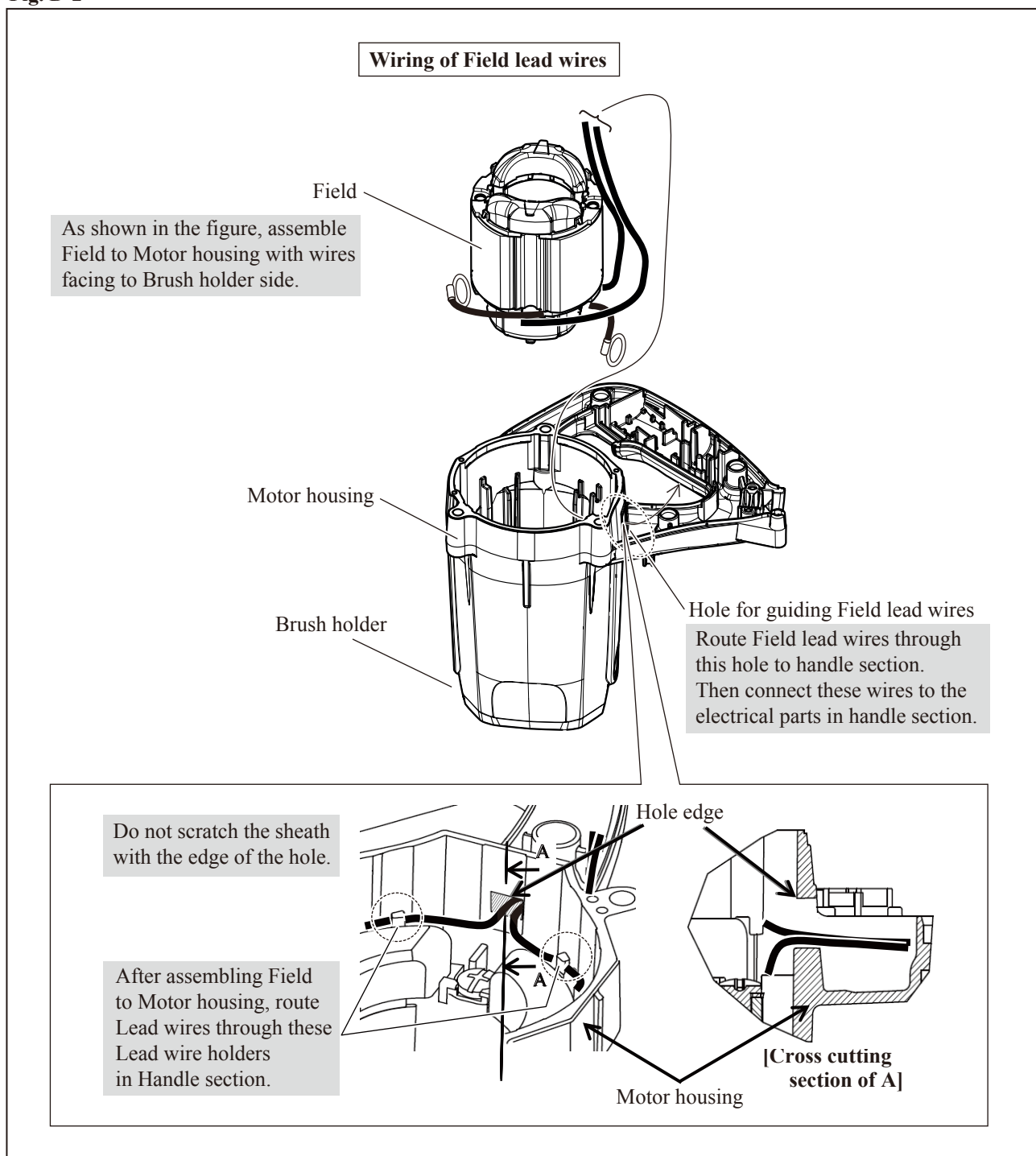


Fig. D-1B



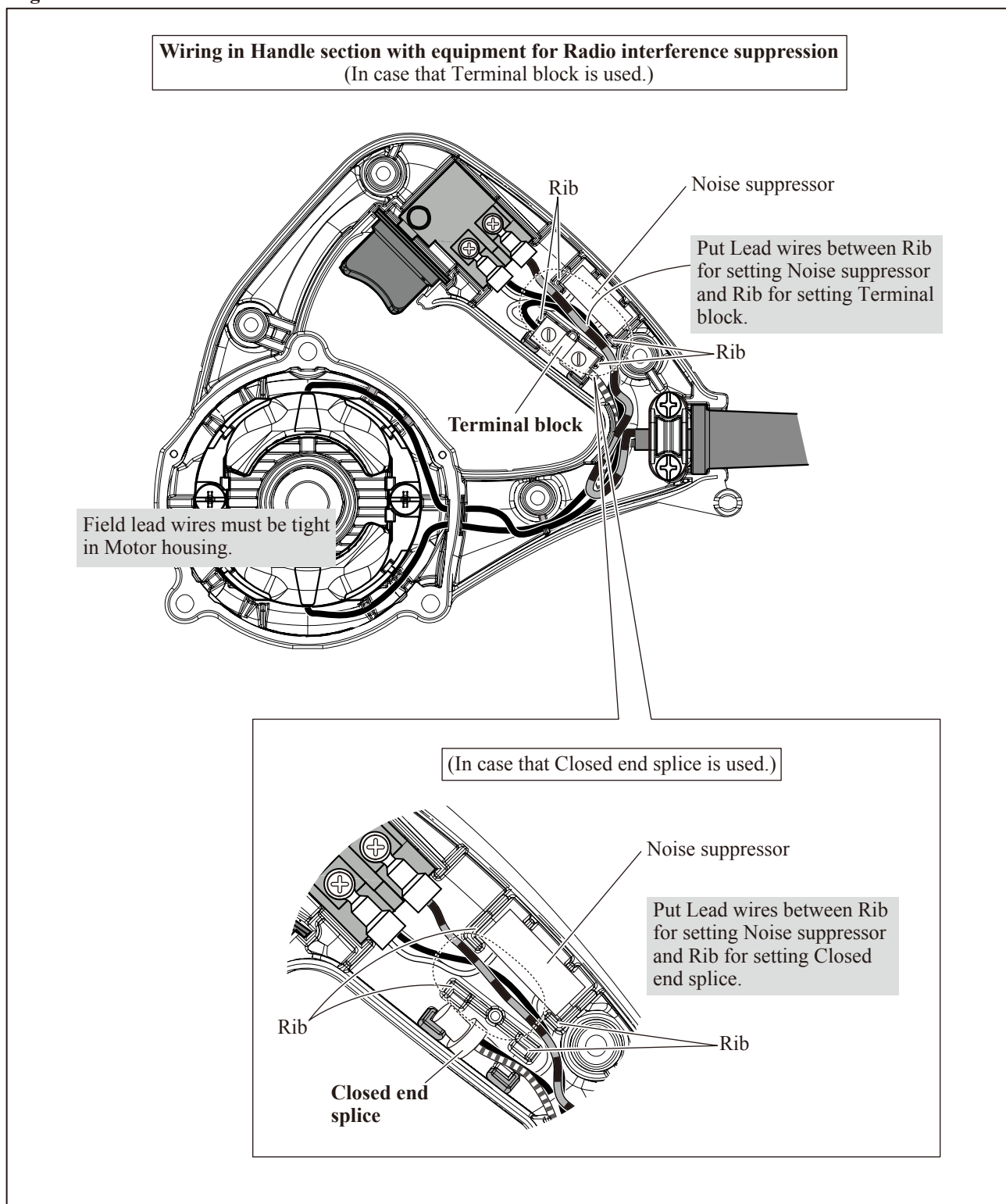
► **Wiring diagram**

Fig. D-2



▶ **Wiring diagram**

Fig. D-3A



▶ **Wiring diagram**

Fig. D-3B

