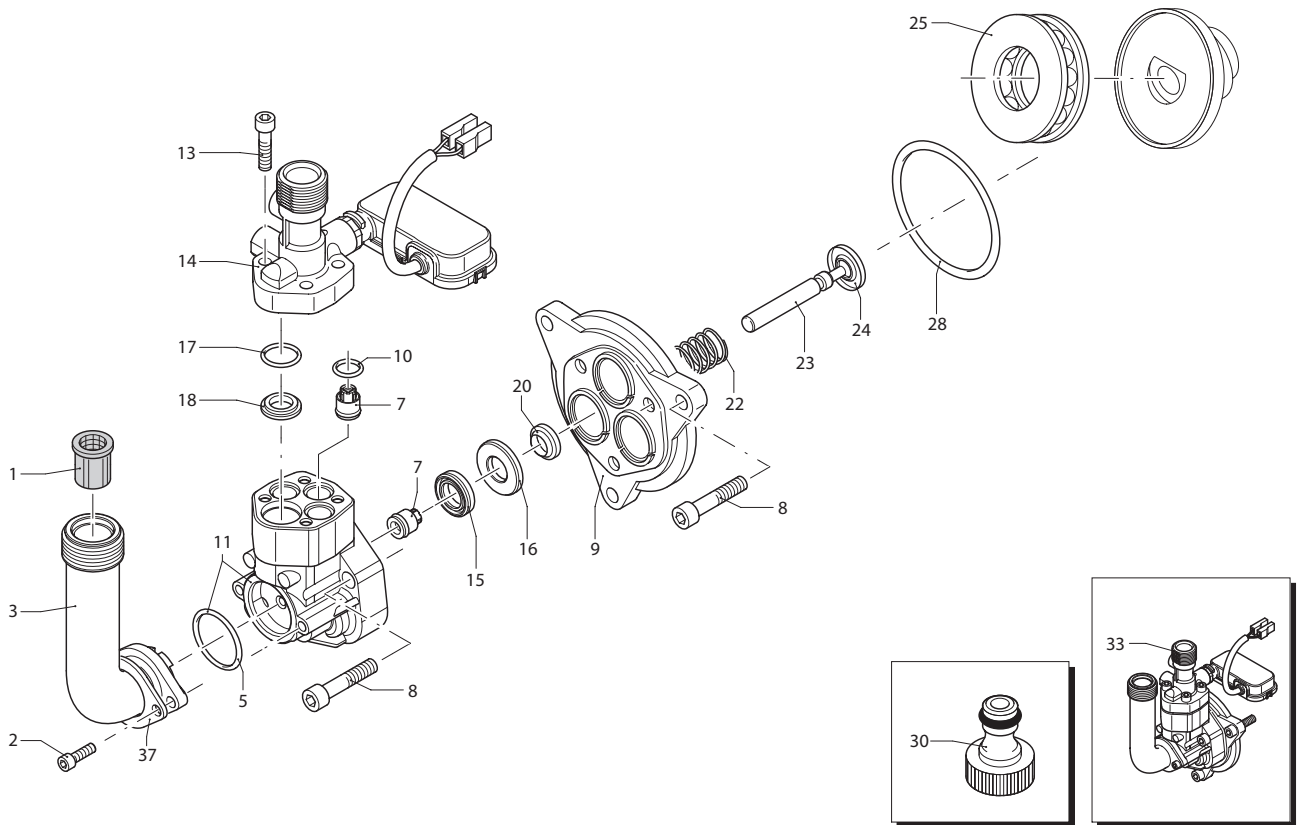


UN002594-CZ

Pos.	Cod. Part n°	Denominazione	Description	Q.tà Q.ty	Note Vedi / See
1	2860047	Cofano	Casing	1	
2	2860100	Manico	Handle	1	
3	2440070	Ruota ø 160	Driven gear	2	
4	2100300	Vite autof. 5x16	Screw	12	
5	2860030	Carter sinistro	Left casing	1	
6	2860060	Staffa	Bracket	1	
7	50055	Fascetta	Clamp	1	
8	2100070	Convogliatore	Conveyor	1	
9	2860020	Carter destro	Right casing	1	

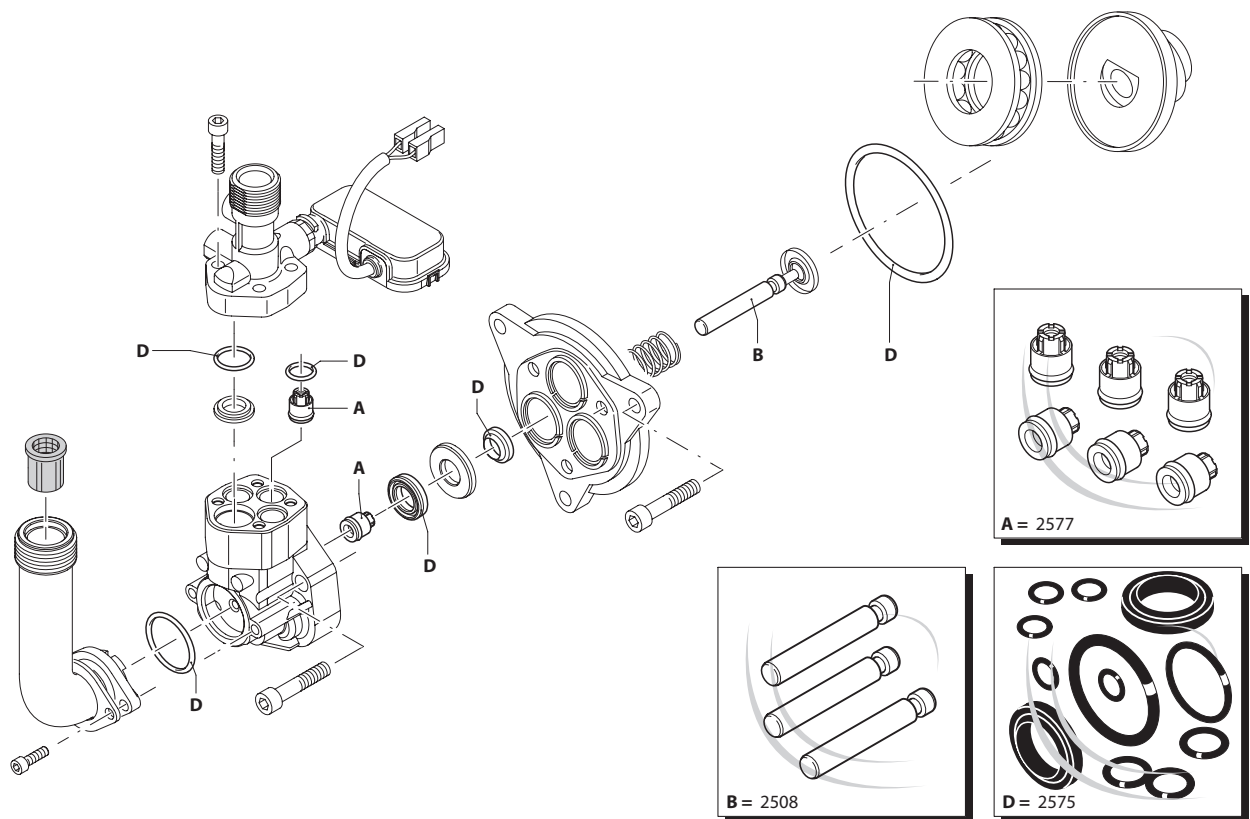
SIMBOLOGIA - SYMBOLS

Cod. 12381 - HW 110 Schuko



UN002595-CZ

KIT RICAMBI / PART KITS



UN002596-CZ

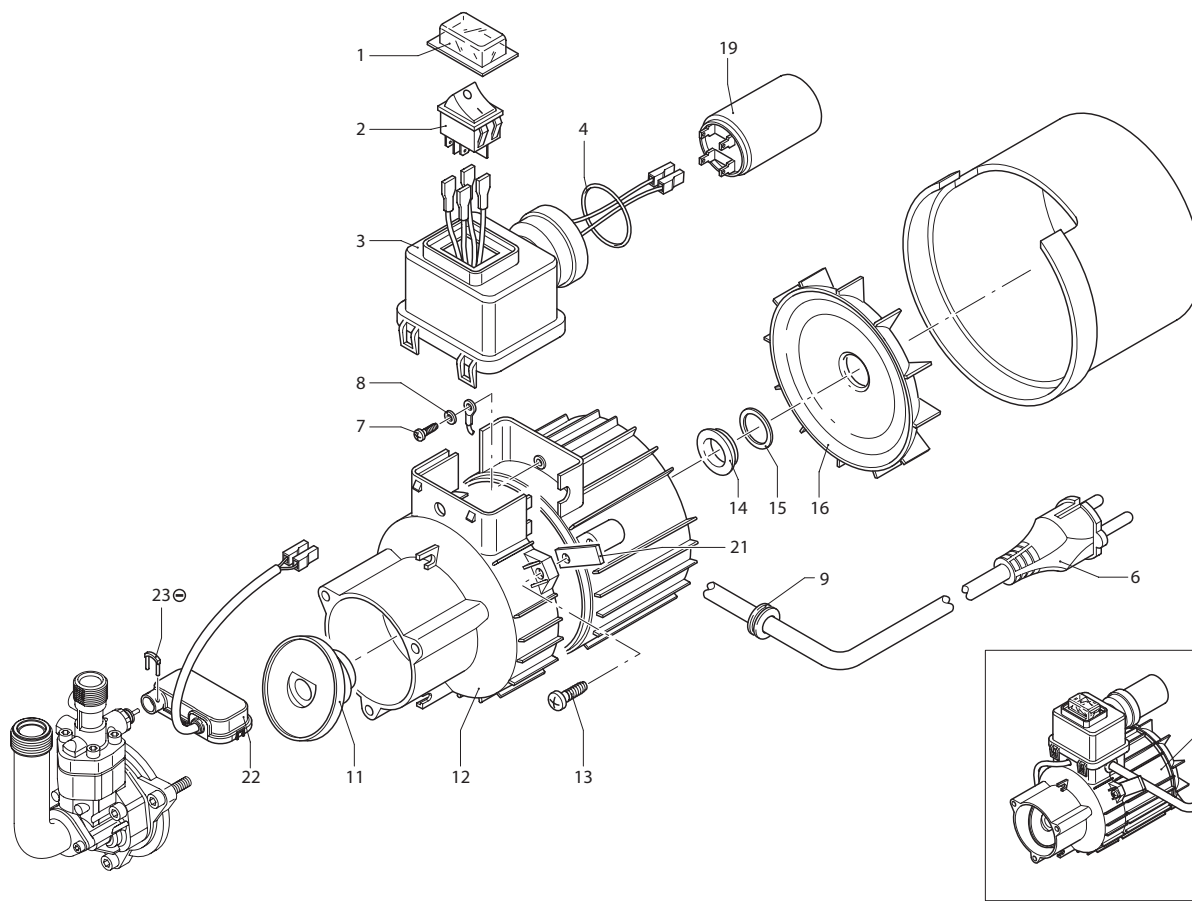
Pos.	Cod. Part n°	Denominazione	Description	Q.tà Q.ty	Note Vedi / See	Pos.	Cod. Part n°	Denominazione	Description	Q.tà Q.ty	Note Vedi / See
1	1340260	Filtro aspirazione acqua	Water suction filter	1							
2	2101000	Vite TCEI M 4x15	Screw	2	Autoformante						
3	2100630	Raccordo aspirazione	Suction fitting	1							
5	550350	OR ø 23,81x2,62	O-Ring	1							
7	2109051	Valvola completa	Complete valve	6							
8	850850	Vite TCEI M 6x30	Screw	6							
9	2100030	Guida pistone ø 12	Piston guide	1							
10	880840	OR ø 9,25x1,78	O-Ring	3							
11	2122	Testa pompa + OR	Pump head + O-Ring	1							
13	1260760	Vite TCEI M 5x20	Screw	4	Autoformante						
14	2250	Kit racc. mandata + TSS	Outlet fitting + TSS kit	1							
15	2200140	Guarnizione ø 12x20	Gasket	3							
16	2020040	Anello appoggio guarn.	Gasket support ring	3							
17	394280	OR ø 12,42x1,78	O-Ring	1							
18	2560480	Boccola tenuta	Bushing	1							
20	1683500	Anello tenuta	Seal ring	3							
22	2020150	Molla	Spring	3							
23	2100130	Pistone ø 12	Piston	3							
24	2020140	Piattello portamolla	Spring plate	3							
25	2021570	Cuscinetto	Bearing	1							
28	850840	OR ø 62x2	O-Ring	1							
30	1461470	Innesto raccordo+guarn.	Attachment for tap+gasket	1	3/4"G(F)						
33	2210	Kit prem. pompa + TSS	Pump assembly + TSS kit	1							
37	2101450	Flangia fissaggio racc.	Inlet fitting plate	1							

KIT RICAMBI - PART KITS

A=KIT 2577 valvole valves		B=KIT 2508 pistoni pistons		D=KIT 2575 tenute gaskets			
Pos.	Q.ty	Pos.	Q.ty	Pos.	Q.ty	Pos.	Q.ty
7	6	23	3	5	1		
				10	3		
				15	3		
				17	1		
				20	3		
				28	1		

Pos.	Q.ty	Pos.	Q.ty	Pos.	Q.ty	Pos.	Q.ty

SIMBOLOGIA - SYMBOLS



UN002597-CZ

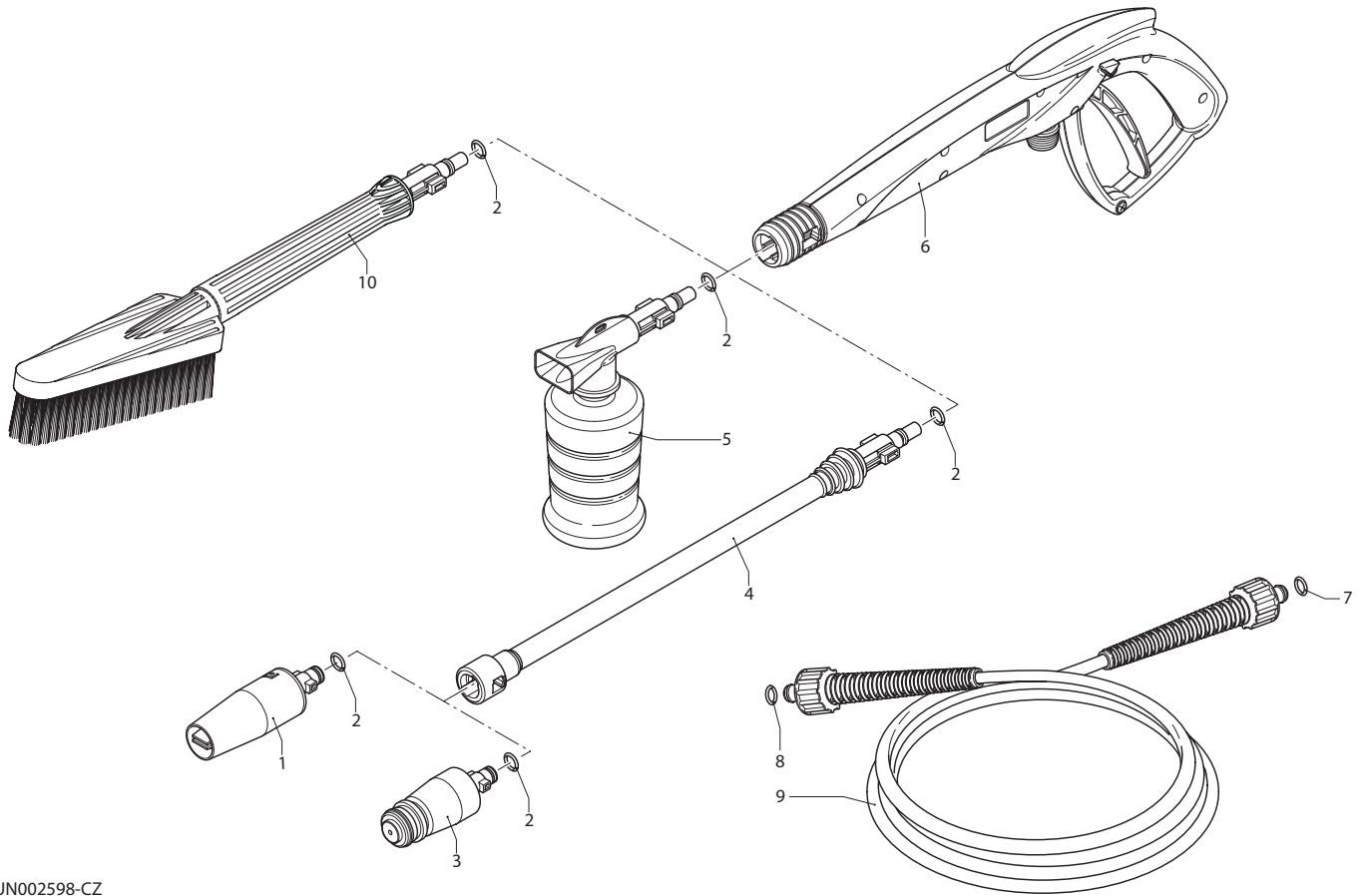
Pos.	Cod. Part n°	Denominazione	Description	Q.tà Q.ty	Note Vedi / See
1	2100280	Cuffia di protezione	Cover	1	
2	1682270	Interruttore 8A	Switch 8A	1	
3	2100060	Scatola interruttore	Switch box	1	
4	390201	OR ø 39,34x2,62	O-Ring	1	
6	2200090	Cavo	Cable	1	❶
7	2020570	Vite autof. M 4x12	Screw	1	
8	1262400	Rosetta ø 4	Washer	1	
9	2100110	Passacavo	Gland	1	
11	2101710	Piattello oscillante	Wobble plate	1	
12	2109270	Prem. corpo pompa	Pump housing assembly	1	
13	2100980	Vite autof. M 5x20	Screw	3	
14	1340350	Anello tenuta	Seal ring	1	
15	2020850	Rondella	Washer	1	
16	1680250	Ventola	Fan	1	
17	4820	Motore elettrico	Electric motor	1	❶
19	2200290	Condensatore 16 µF	Capacitor 16 µF	1	
21	2440160	Piastrino	Plate	1	
22	2029721	Prem. TSS	TSS assembly	1	
23	2021960	Forcella	Clip	1	

Pos.	Cod. Part n°	Denominazione	Description	Q.tà Q.ty	Note Vedi / See

SIMBOLOGIA - SYMBOLS

Cod. 12381 - HW 110 Schuko

❶ 230 V/50Hz - Schuko



UN002598-CZ

Pos.	Cod. Part n°	Denominazione	Description	Q.tà Q.ty	Note Vedi / See
1	40371	Testina	Head	1	
2	391000	OR ø 9,13x2,62	O-Ring	3	
3	40343	Rotopower	Rotopower	1	
4	40487	Lancia	Lance	1	
5	40352	Serbatoio detergente	Detergent tank	1	
6	40350	Pistola	Gun	1	
7	2000770	OR ø 10x2	O-Ring	1	
8	1080250	OR ø 7,67x1,78	O-Ring	1	
9	2620400	Tubo di mandata	High pressure hose	1	
10	40417	Spazzola fissa	Brush	1	

Pos.	Cod. Part n°	Denominazione	Description	Q.tà Q.ty	Note Vedi / See

SIMBOLOGIA - SYMBOLS

Cod.12381 HW 110 Makita

Part n	Description	Price
2122	Pump head + O-Ring	
2210	Pump assembly + TSS kit	
2250	Outlet fitting + TSS kit	
4820	Electric motor	
40343	Rotopower	
40350	Gun	
40352	Detergent tank	
40371	Head	
40417	Brush	
40487	Lance	
50055	Clamp	
390201	O-Ring	
391000	O-Ring	
394280	O-Ring	
550350	O-Ring	
850840	O-Ring	
850850	Screw	
880840	O-Ring	
1080250	O-Ring	
1260760	Screw	
1262400	Washer	
1340260	Water suction filter	
1340350	Seal ring	
1461470	Attachment for tap+gasket	
1680250	Fan	
1682270	Switch 8A	
1683500	Seal ring	
2000770	O-Ring	
2020040	Gasket support ring	
2020140	Spring plate	
2020150	Spring	
2020570	Screw	
2020850	Washer	
2021570	Bearing	
2021960	Clip	
2029721	TSS assembly	
2100030	Piston guide	
2100060	Switch box	
2100070	Conveyor	
2100110	Gland	
2100130	Piston	
2100280	Cover	
2100300	Screw	
2100630	Suction fitting	
2100980	Screw	
2101000	Screw	
2101450	Inlet fitting plate	
2101710	Wobble plate	
2109051	Complete valve	
2109270	Pump housing assembly	
2200090	Cable	
2200140	Gasket	
2200290	Capacitor 16 µF	
2440070	Driven gear	
2440160	Plate	
2560480	Bushing	
2620400	High pressure hose	
2860020	Right casing	
2860030	Left casing	
2860047	Casing	
2860100	Handle	
2860060	Bracket	