

TECHNICAL INFORMATION



PRODUCT

P 1 / 6

Models No. ► CL070D, CL100D

Description ► Cordless Cleaner

CONCEPT AND MAIN APPLICATIONS

Models CL070D and CL100D are handy cordless cleaners of cloth filtration type powered by Makita Li-ion battery; CL070D by 7.2V/1.0Ah battery BL7010, CL100D by 10.8V/1.3Ah battery BL1013.

These products are available in the following variations.

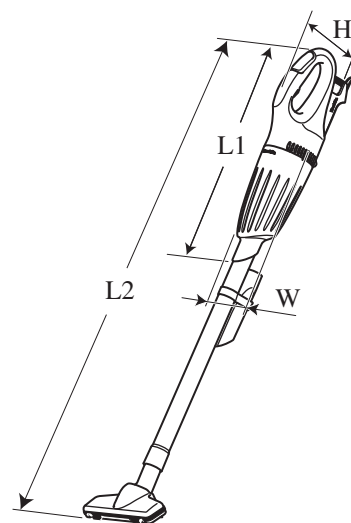
CL070D

Model No.	Battery		Charger	Housing color
	type	quantity		
CL070DS	BL7010 (Li-ion 1.0Ah)	1	DC07SA	Ivory
CL070DZ	No		No	Ivory
CL070DZX				Makita-blue

CL100D

Model No.	Battery		Charger	Housing color
	type	quantity		
CL100DW	BL1013 (Li-ion 1.3Ah)	1	DC10WA	Ivory
CL100DZ	No		No	Ivory
CL100DZX				Makita-blue

The models also includes the accessories listed below in "Standard equipment".



Dimensions: mm (")		
	CL070D	CL100D
Length (L1)	454 (17-7/8)	
Length (L2)	966 (38)	
Width (W)	103 (4-1/16)	
Height (H)	142 (5-5/8)	150 (5-7/8)

L1: without T-nozzle and Extension pipe
L2: with T-nozzle and Extension pipe

► Specification

Specification		Model	CL070D	CL100D
Battery	Cell		Li-ion	
	Voltage: V		7.2	10.8
	Capacity: Ah		1.0	1.3
Max. air flow: m ³ /minute			1.2	
Max. sealed suction: kPa [Column of water]			1.8 [180mmH ₂ O]	
Suction power: W			14	
Continuous use (approx.): minute			8	12
Dust capacity: mL			600	
Net weight*1: kg (lbs)			0.81 (1.8)*2	0.88 (1.9)*3

*1 Weight according to EPTA-Procedure 01/2003

*2 with Battery BL7010, without T-nozzle and Extension pipe

*3 with Battery BL1013, without T-nozzle and Extension pipe

► Standard equipment

Nozzle assembly (T-nozzle) 1 Sash nozzle 1 Filter (factory-mounted) 1
Pipe (Extension pipe) 1 Sash nozzle holder 1 Pre-filter (factory-mounted) 1

Note: The standard equipment for the tool shown above may vary by country.

► Optional accessories

Battery BL7010 (CL070D only) Nozzle assembly (for rug/carpet) Filter
Battery BL1013 (CL100D only) Shelf brush Pre-filter
Charger DC07SA (CL070D only) Flexible hose
Charger DC10WA Round brush

► Repair

CAUTION: Remove the battery cartridge from the machine for safety before repair/ maintenance in accordance with the instruction manual!

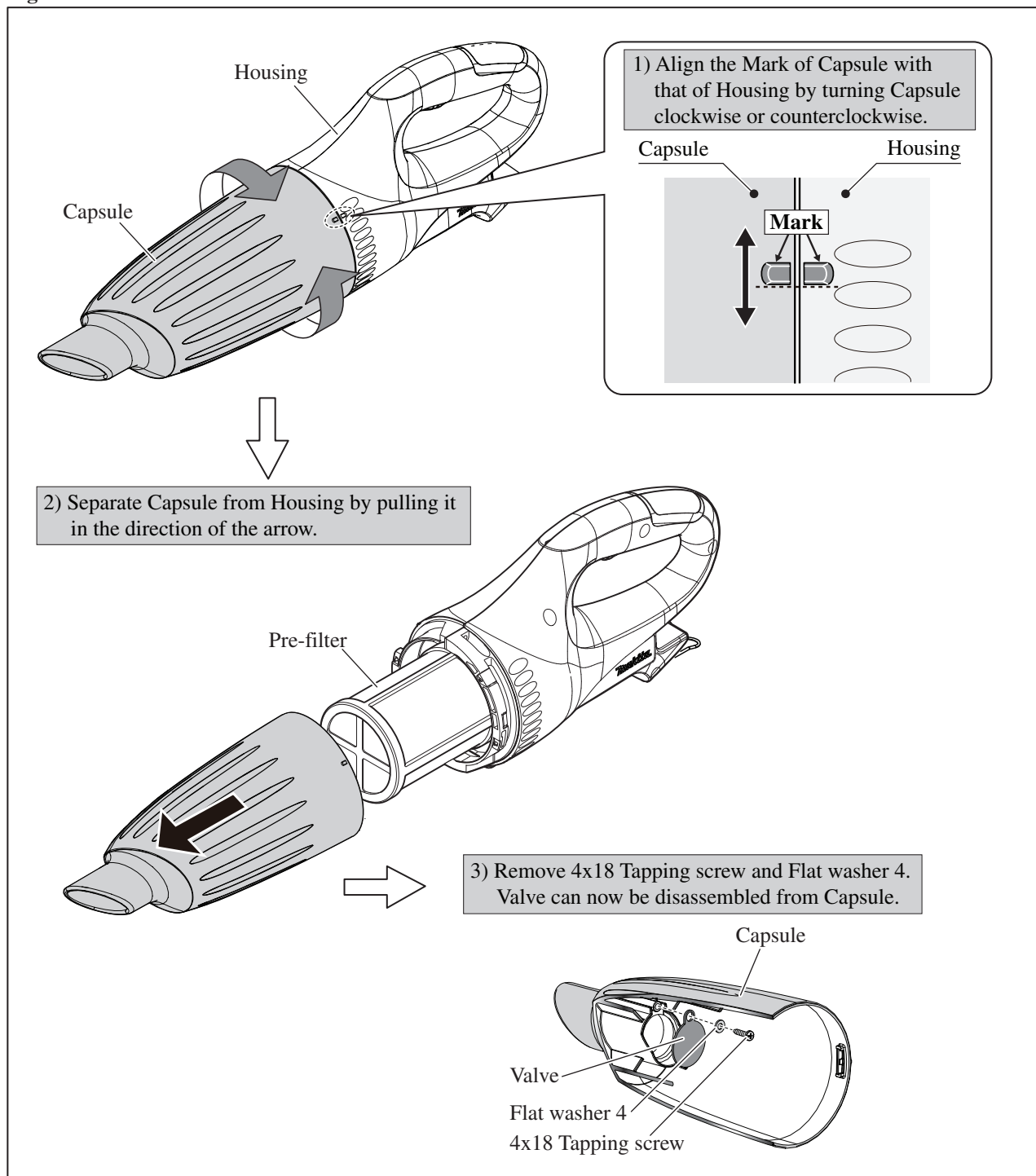
[3] DISASSEMBLY/ASSEMBLY

[3]-1. Capsule Section

DISASSEMBLING

Capsule section can be disassembled as illustrated in **Fig. 1**.

Fig. 1



ASSEMBLING

Do the reverse of the disassembly steps. (**Fig. 1**)

► Repair

[3] DISASSEMBLY/ASSEMBLY

[3] -2. Motor Assembly

DISASSEMBLING

- 1) Separate Capsule from Housing as illustrated in Fig. 1.
- 2) Motor assembly can be disassembled from Housing as illustrated in Figs. 2, 3.

Fig. 2

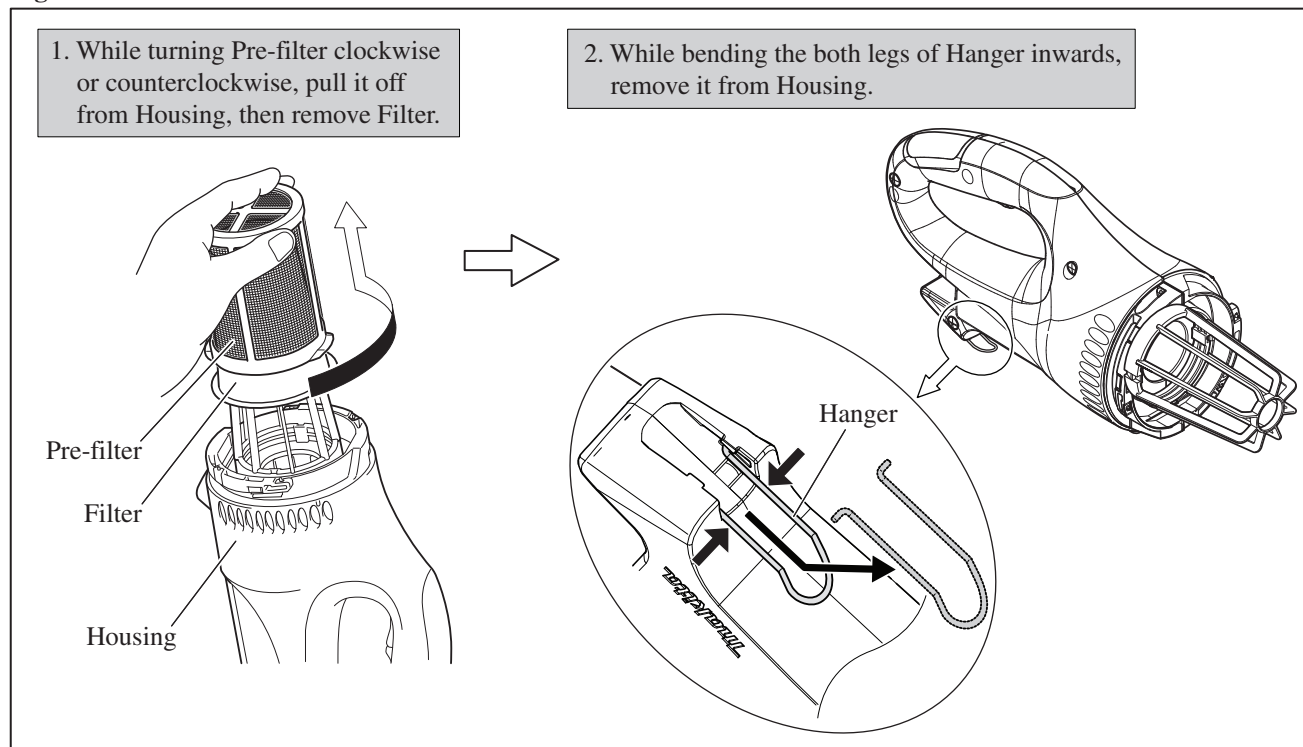
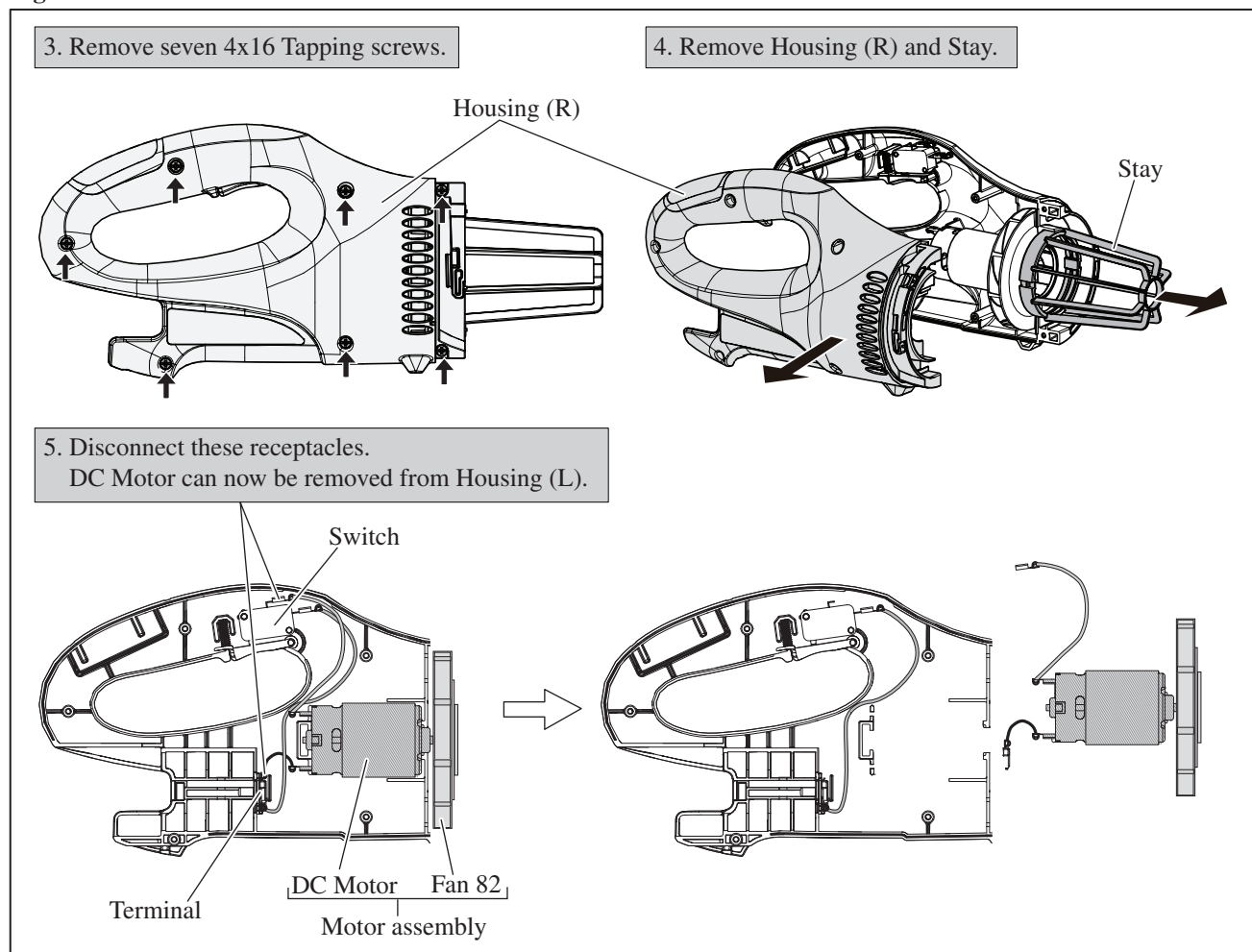


Fig. 3



► Repair

[3] DISASSEMBLY/ASSEMBLY

[3] -2. Motor Assembly

ASSEMBLING

- 1) Assemble Motor assembly to Housing set (L) as illustrated in **Fig. 4**.
- 2) Assemble Switch lever to Housing (L) as illustrated in **Fig. 5**.
- 3) Assemble Housing (R) to Housing (L), then assemble Hanger to Housing (Fig. 6)

Fig. 4

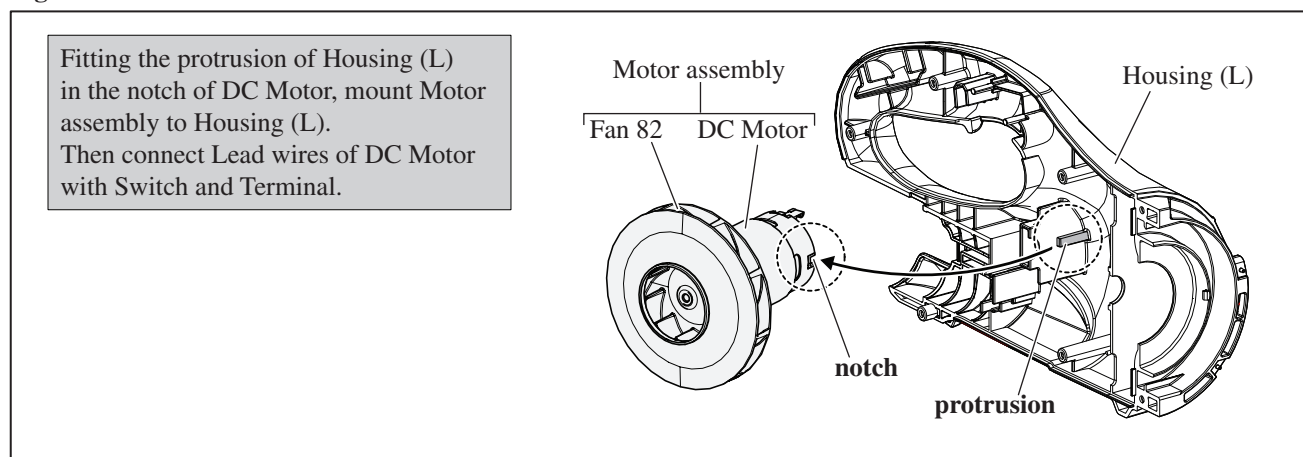


Fig. 5

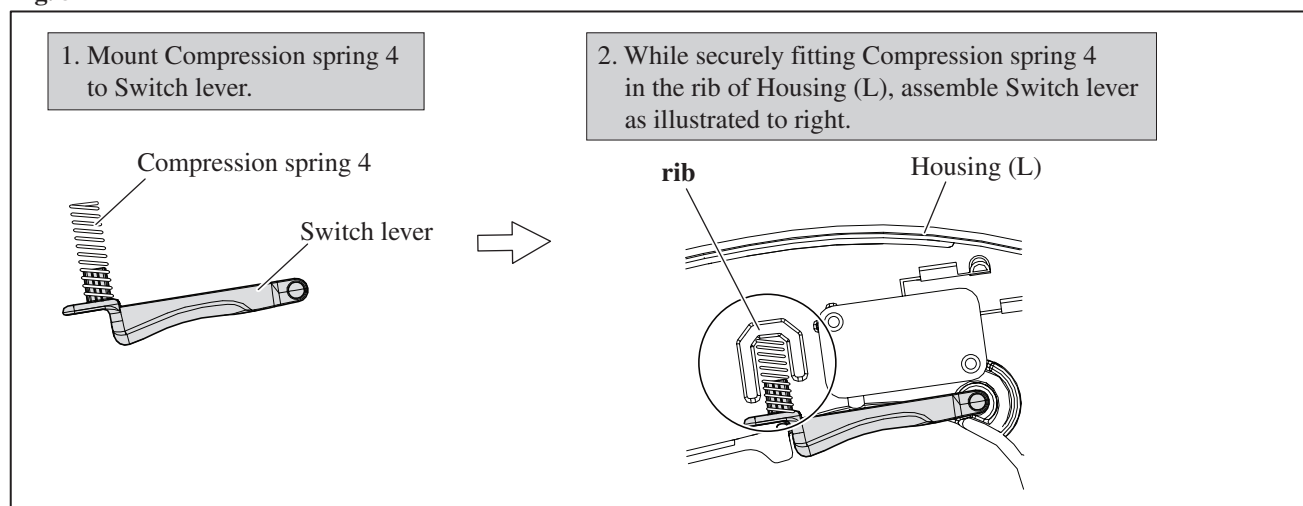
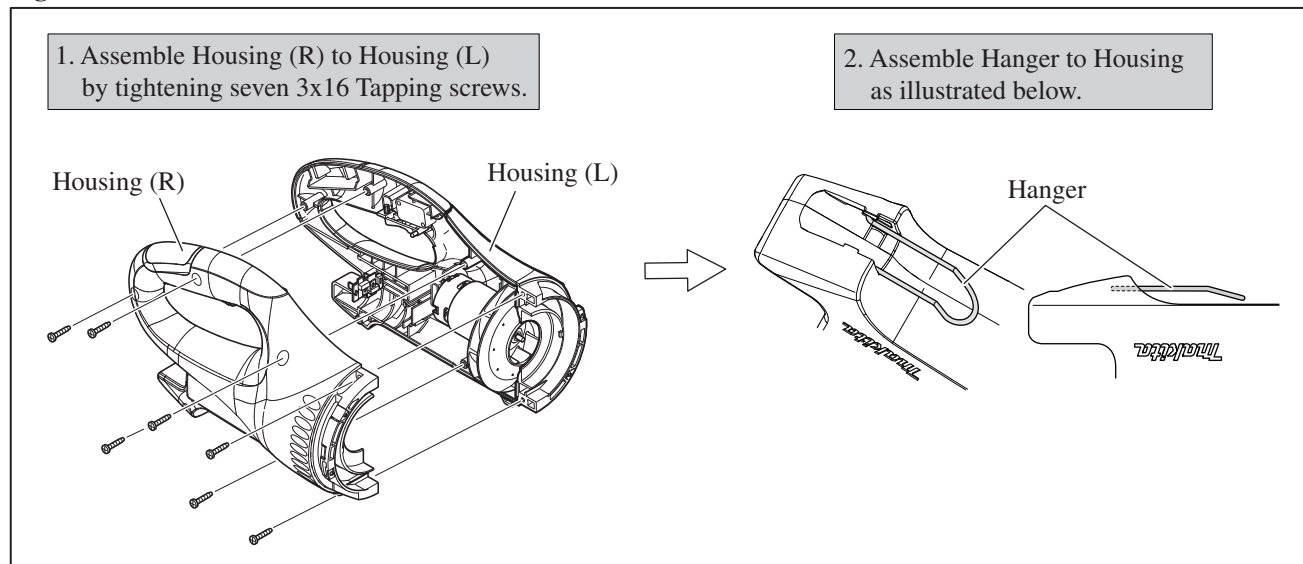


Fig. 6



► Repair

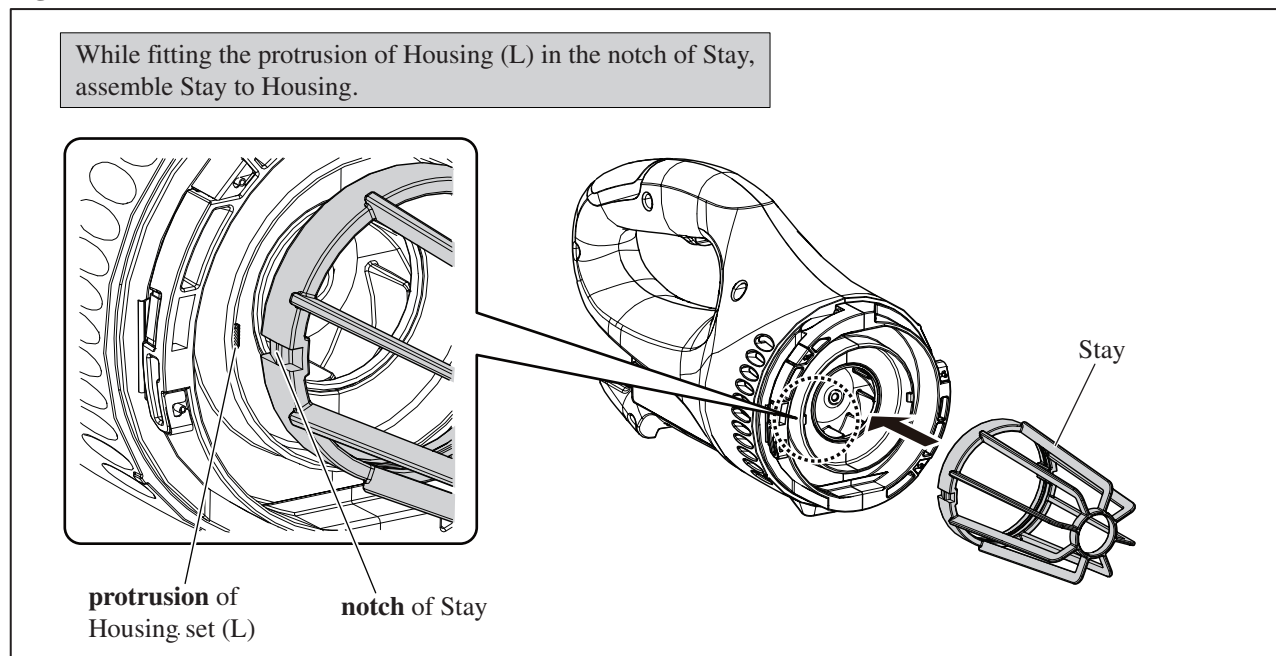
[3] DISASSEMBLY/ASSEMBLY

[3] -2. Motor Assembly

ASSEMBLING

4) Assemble Stay to Housing (**Fig. 7**)

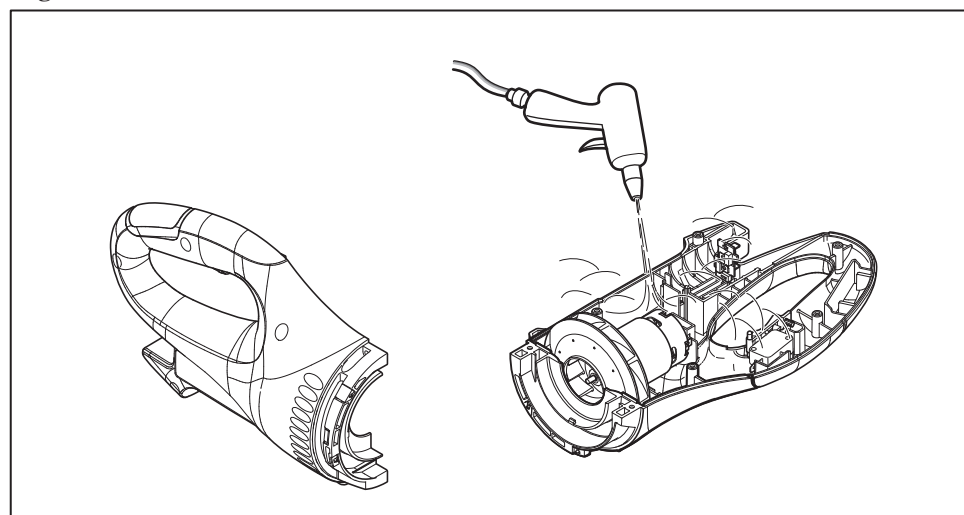
Fig. 7



[4] MAINTENANCE

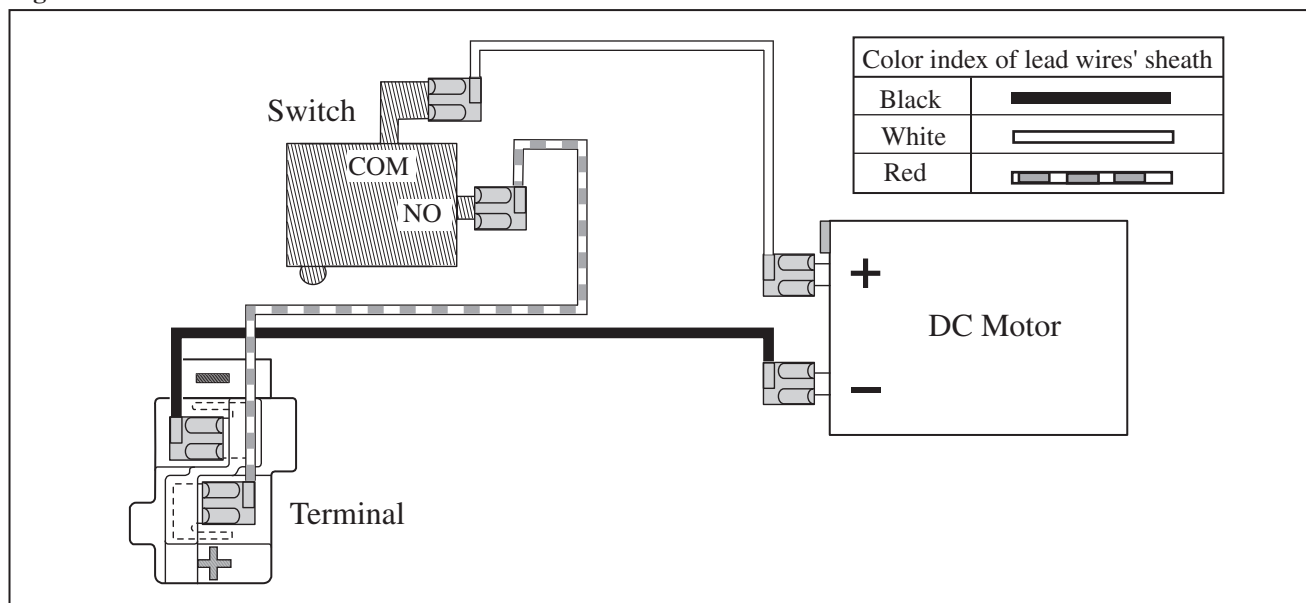
When Housing is disassembled, clean up the inside of the machine by blowing off the dust that settles on DC Motor, Fan, Housing, etc. with air duster for longer tool life. (**Fig. 8**)

Fig. 8



► Circuit diagram

Fig. D-1



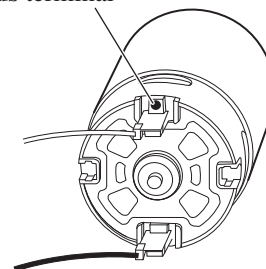
► Wiring diagram

Fig. D-2

Wiring of DC Motor

Connect the Receptacle of white Lead wire to the plus terminal of DC Motor; the plus terminal is indicated by a **red dot**.
 Connect the Receptacle of black Lead wire to the other terminal (the minus terminal) of DC Motor.
 Then assemble DC Motor to Housing (L) with the red dot on the Grip side (top side) so that the wire connecting portions of the two Receptacles face Housing (L) side.

Red dot indicating
Plus terminal



Wiring in Housing (L)

Connect the six Receptacles of Lead wires to the electrical parts (DC Motor, Terminal, Switch) with all wire connecting portions of the Receptacles positioned on Housing (L) side.
 Failure to follow this instruction will result in pinching of Lead wires between Housing (L) and Housing (R).

○ = Wire connecting portion of Receptacle

