

# TECHNICAL INFORMATION



PRODUCT

P 1 / 4

**Models No.** ▶ 6327D, 6328D

**Description** ▶ Cordless Driver Drill 13mm (1/2")

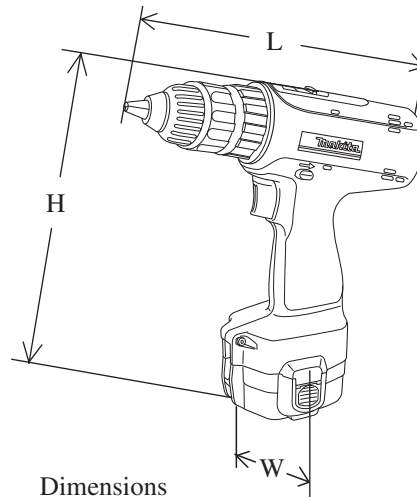
## CONCEPTION AND MAIN APPLICATIONS

6327D : 12 V 13mm version of Mod.6227D

6328D : 14.4 V 13mm version of Mod.6228D

The variation of these models are as follows.

Model No.	Battery					Charger
	No.	Type	V	Ah	Q'ty	
6327DW	1220	Ni-Cd	12	1.3	1 pc.	DC1470
6327DWE	1220	Ni-Cd	12	1.3	2 pcs.	DC1470
6327DWD	1234	Ni-MH	12	2.6	1 pc.	DC1411
6327DWE	1234	Ni-MH	12	2.6	2 pcs.	DC1411
6328DW	1420	Ni-Cd	14.4	1.3	1 pc.	DC1470
6328DWE	1420	Ni-Cd	14.4	1.3	2 pcs.	DC1470
6328DWD	1434	Ni-MH	14.4	2.6	1 pc.	DC1411
6328DWE	1434	Ni-MH	14.4	2.6	2 pcs.	DC1411



Dimensions

	6327D	6328D
L	220mm 8-5/8"	220mm 8-1/4"
H	235mm 9-1/4"	240mm 9-7/16"
W	94mm 3-11/16"	94mm 3-11/16"

## ► Specification

Model No.	6327D		6328D	
Voltage	12 V		14.4 V	
No load speed (min-1= rpm.)	High speed	0 - 1,100		
	Low speed	0 - 350		
Chuck ability	1.5mm (1/16") - 13mm (1/2")			
Capacities	in Steel	13mm (1/2")		
	in Wood	24mm (15/16")		
	Screw	5.1mm x 63mm (3/16" x 2-1/2")		
Max tightening torque	High speed	7Nm (71.4Kgf.cm / 62.0 in lbs)		
	Low speed	22Nm (224.3Kgf.cm / 194.8 in lbs)		
Reversible action switch	Yes			
Electric brake	Yes			
Torque adjustment	16 stage and drill mode			
Net weight	1.6 Kg (3.5 lbs)		1.7 Kg (3.7 lbs)	

## ► Standard equipment

- \* + - Bit 2-65 ..... 1 pc.
- \* Battery cover ..... 1 pc.
- \* Plastic carrying case... 1 pc.

< Note > The standard equipment for the tool shown may differ from country to country.

## ► Optional accessories

Wool bonnet, Various drill bits for wood and metal, Various philips bits, slotted bits, socket bits,

Rubber pad assembly, Buff 125

Set plate for battery 1200, 1202, 1202A (Mod.6327D)

Charger DC2101, DC1411, DC1422, DC1439, DC1470, DC1801

Batteries

for 6327D	1200, 1202, 1202A, 1222, 1233, 1234, 1235
for 6328D	1420, 1422, 1433, 1434, 1435

## ► Repair

### (1) Removing gear assembly

Take off drill chuck first.

Be careful that compression spring 4 does not go out from speed change lever, when removing gear assembly from housing.

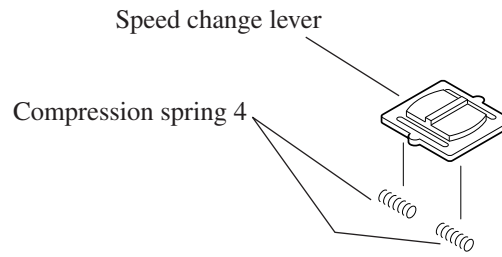


Fig. 1

### (2) Assembling

#### 1. Assembling motor and gear assembly

1) Motor bracket is, in advance, assembled to gear assembly for spare parts.

Remove the motor bracket from gear assembly by turning anti-clockwise.

And fasten motor bracket to motor with screw. See Fig.2.

2) Assemble motor equipped with motor bracket to gear assembly by turning clockwise. See Fig.2.

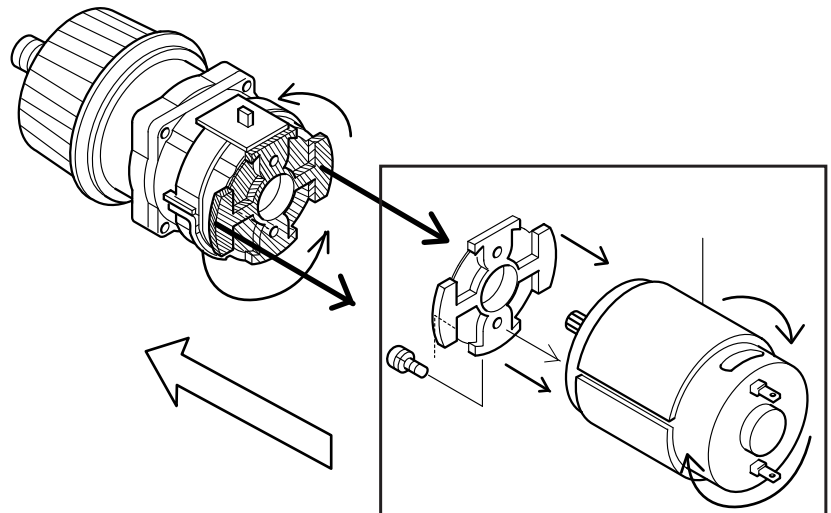


Fig. 2

#### 2. Assembling leaf spring

Assemble leaf spring to housing L as illustrated in Fig.3.

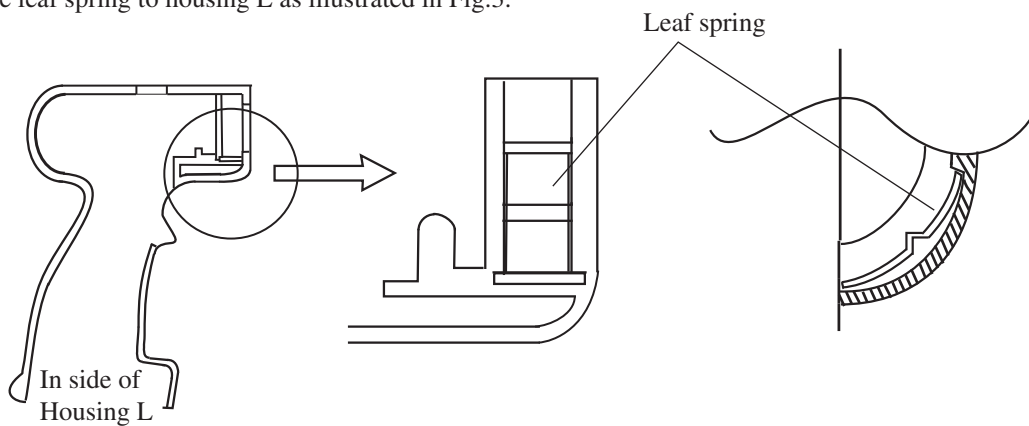


Fig. 3

## 2. Installing of Speed change lever

1) Place two Compression spring 4s into Speed change lever as illustrated in Fig.4.

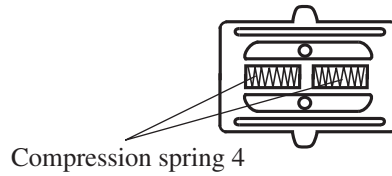


Fig. 4

2) Being careful that compression spring 4 may not comes out , install speed change lever assembly on the projection of change lever as shown in Fig. 5.

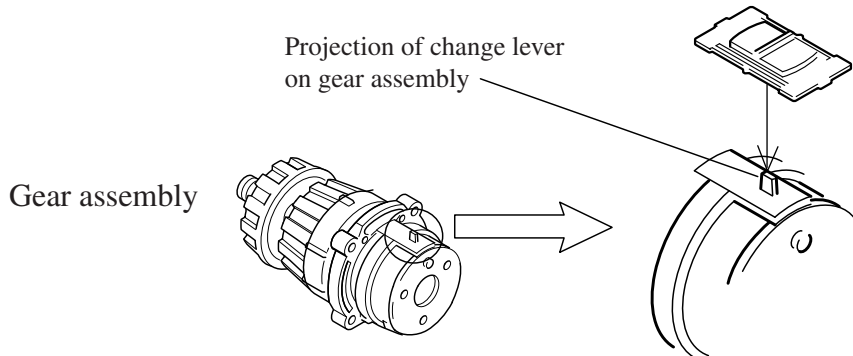


Fig. 5

## 3 Assembling to Housing

1) When attaching a unit of gear assembly and motor, etc. to housing L, place speed change lever in the position as shown in Fig. 6.

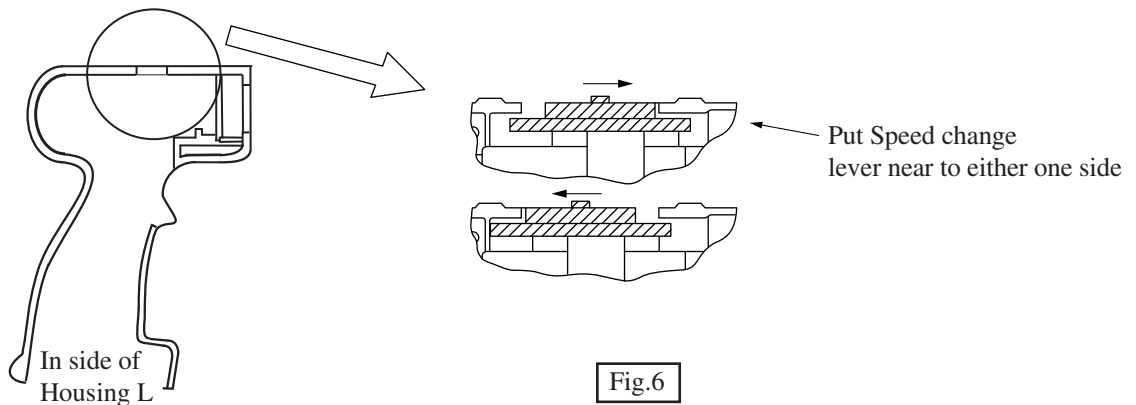


Fig.6

## 4 Assembling drill chuck

1) Set drill chuck on spindle, and fasten a hex bar with chuck.

2) Hold the machine with vise as illustrated in Fig.7.

3) Adjust the switch or lever as follows.

Speed change lever : Low speed **I**

Reversible switch : Clockwise rotation

Adjusting ring : Drill mode  **▶**

4) Attach full charged battery to the machine, and hold the grip firmly.

5) Operate the machine adjusted as 1) - 4) with full speed for approx. one second. At this time you have to hold the machine so strong that you can withstand the shock by spindle lock.

6) Open the three jaws of chuck fully, and fasten pan head screw M5x22 anti-clockwise firmly.

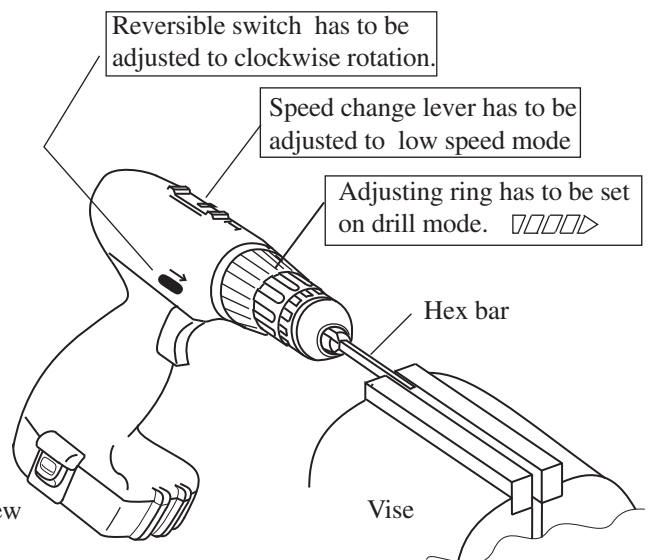
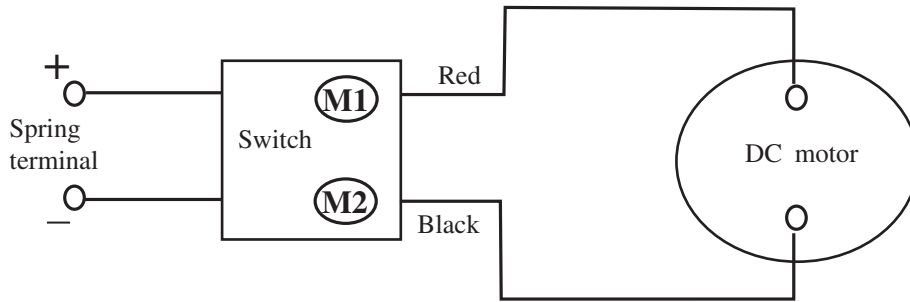


Fig.7



► **Wiring diagram**

Lead wires have to be set as illustrated in Fig.C, paying attention to the following matters.

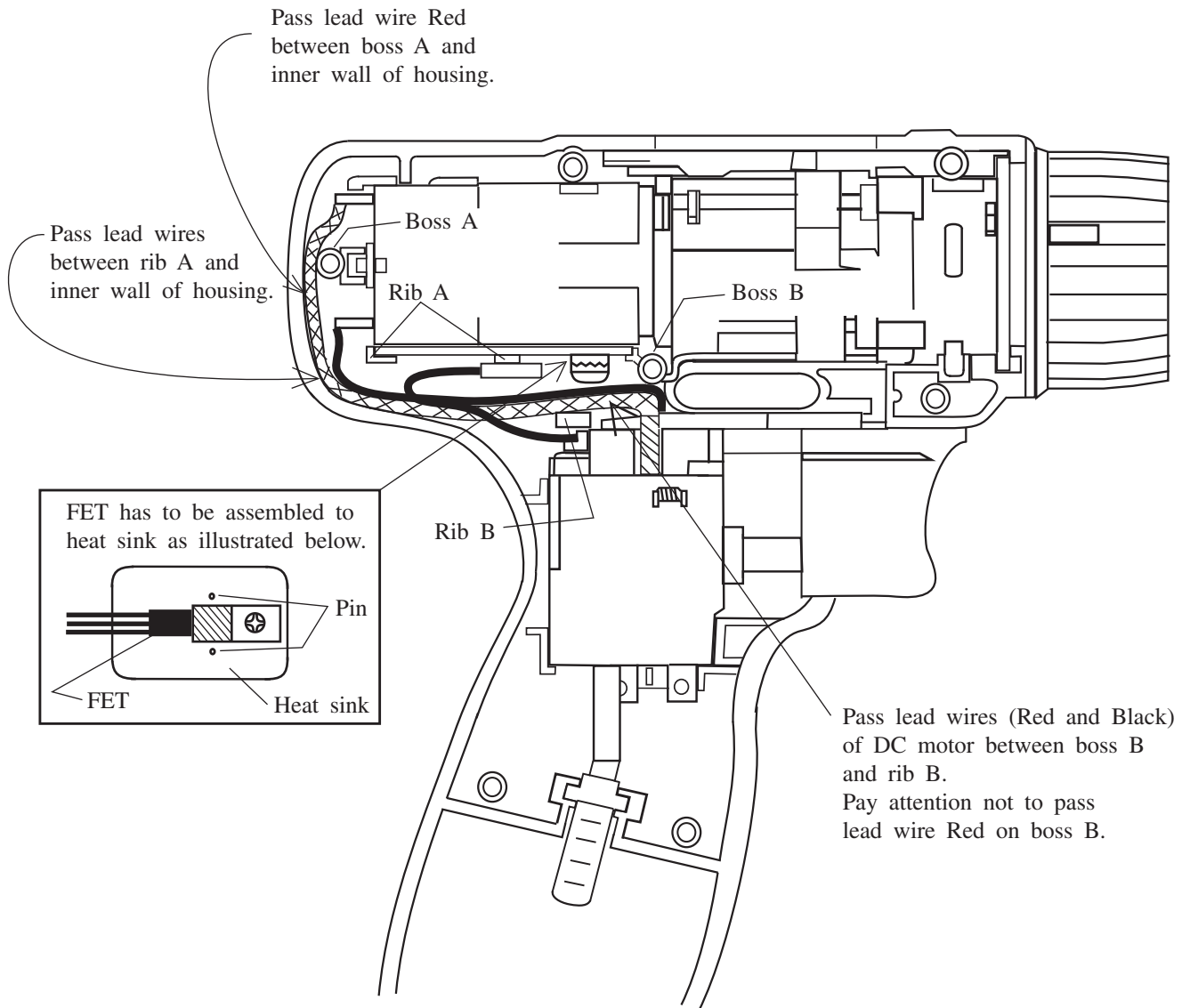


Fig.C